

AngloGold Ashanti and
Commander Resources

Jointly Exploring the
Baffin Gold Project



Gordon Davidson
General Manager, Projects
Commander Resources Ltd.

Nunavut Mining Symposium April, 2011



CORPORATE DISCLOSURE

Disclaimer

The information contained herein, while obtained from sources which we believe are reliable, is not guaranteed as to its accuracy or completeness. The company is an exploration stage mineral resource exploration company and none of its mineral projects have yet to be proven to be economic. The contents of this presentation is for information purposes only and does not constitute an offer to sell or a solicitation to purchase any securities referred to herein.

Forward-looking Statements

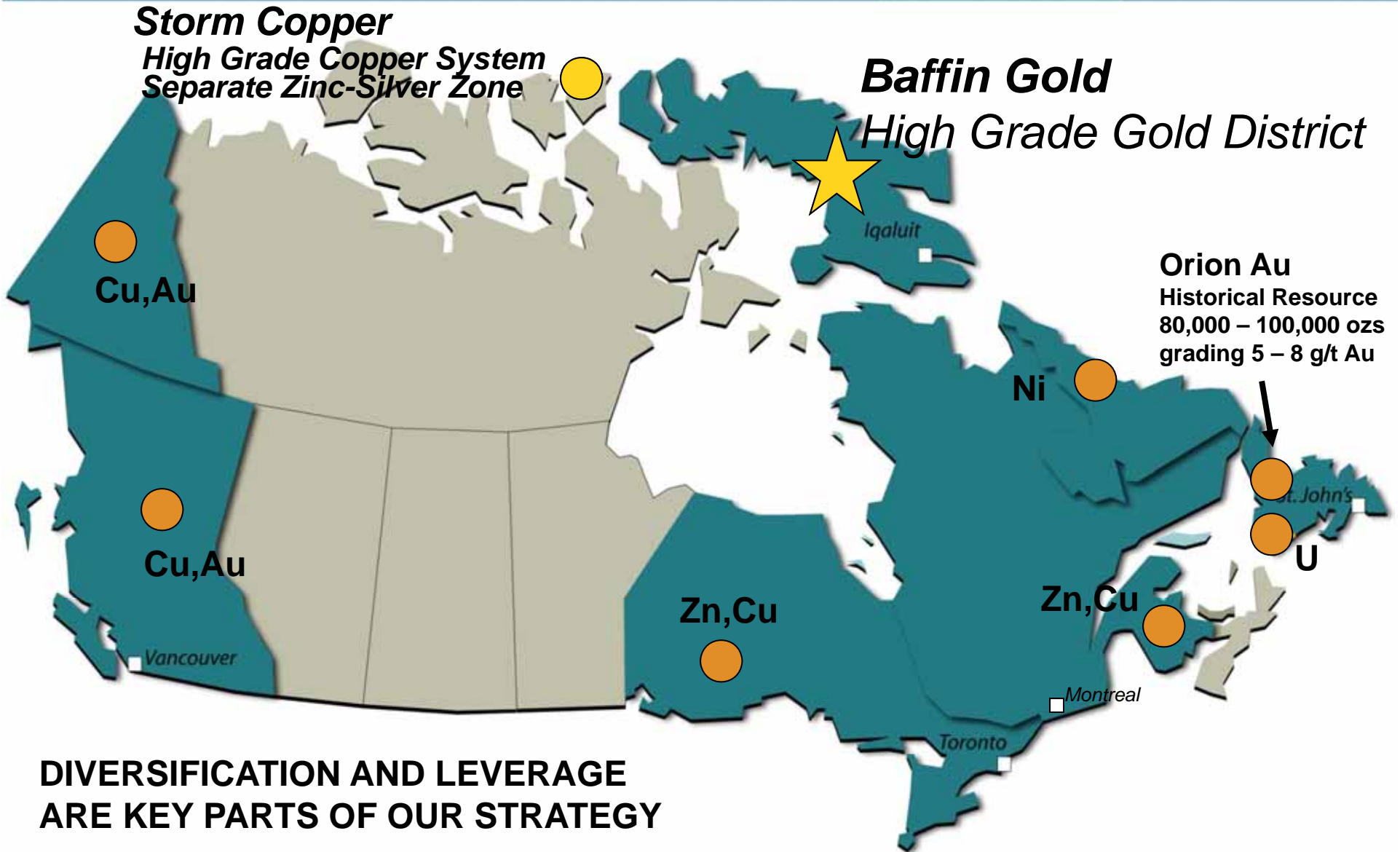
This presentation includes certain forward-looking statements about future events and/or financial results which are forward-looking in nature and subject to risks and uncertainties. Forward-looking statements include without limitation, statements regarding the company's plans, goals or objectives and future exploration, development, potential mineralization, exploration results and future plans and objectives of Commander. Forward-looking statements can generally be identified by the use of forward-looking terminology such as "may", "will", "expect", "intend", "estimate", "anticipate", "believe", or "continue" or the negative thereof or variations thereon or similar terminology. There can be no assurance that such statements will prove to be accurate and actual results and future events could differ materially from those anticipated in such statements. Important factors that could cause actual results to differ materially from expectations include risks associated with mining generally and exploration stage projects in particular. Potential investors should conduct their own investigations as to the suitability of investing in securities of Commander.



**COMMANDER
RESOURCES LTD.**



CANADA FOCUS





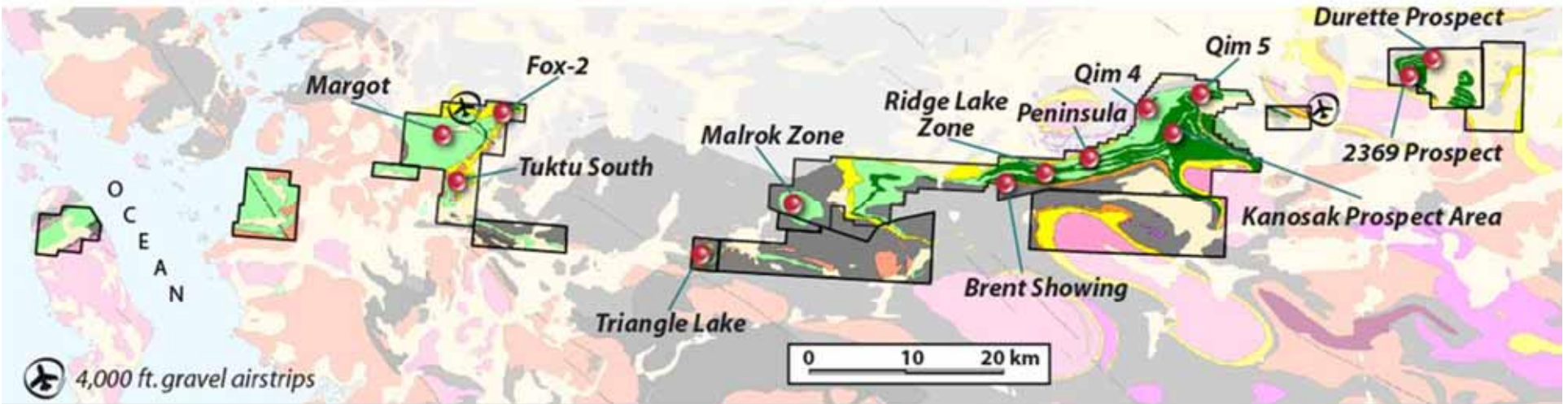
Nunavut Project Location Map



Five Successful Mines in Canada's Arctic



BAFFIN GOLD BELT



- Large land position – wholly owned by CMD
- High grade prospects with two advanced zones
- Favourable geological setting
- Good politics



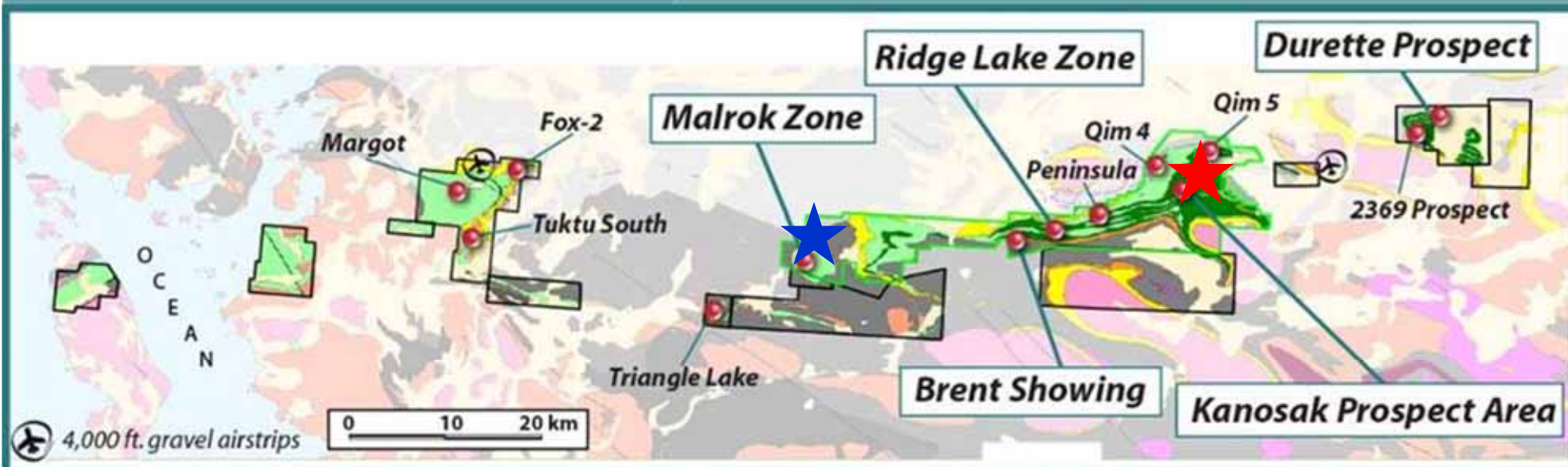
Camp location next to 4000ft gravel airstrip



**COMMANDER
RESOURCES LTD.**



BAFFIN GOLD BELT MAIN GOLD ZONES AND PROSPECTS

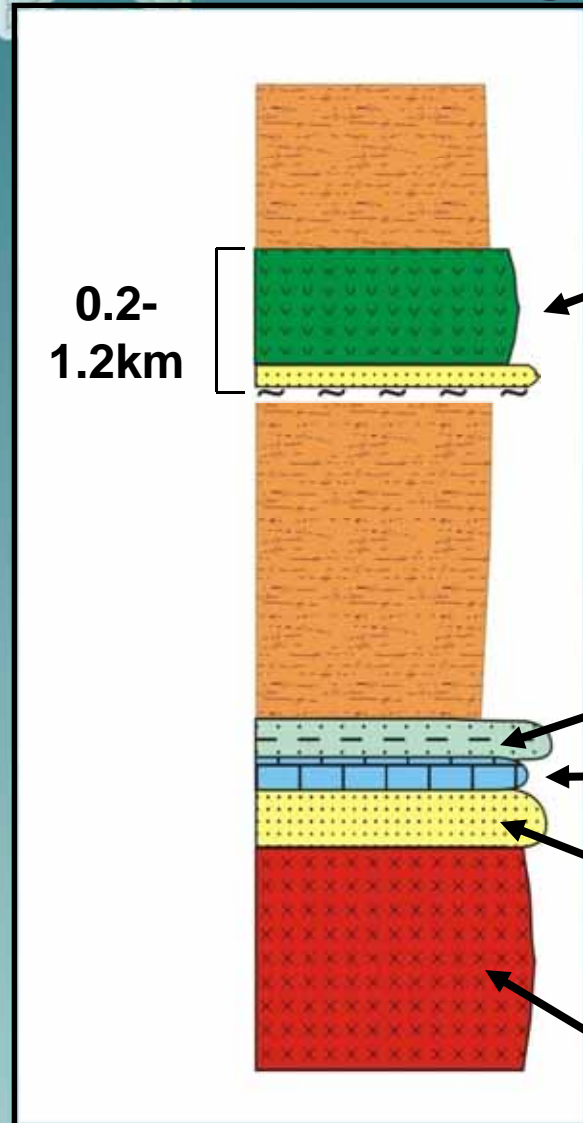


**Gold in iron formations, shear zones, quartz veins,
metasediments and metavolcanics
– a truly “pregnant” system**



**COMMANDER
RESOURCES LTD.**

Piling Group Stratigraphy



Basalt/volcaniclastic sedimentary beds/mafic and ultramafic sills (Bravo Lake Formation)

Greywacke/psammite/semipelite (Longstaff Bluff Formation)

Sulphidic schist (Astarte River Formation)

Marble/dolomite/calc-silicate (Flint Lake Formation)

Quartzite/semipelite (Dewar Lakes Formation)

Archean basement



**COMMANDER
RESOURCES LTD.**

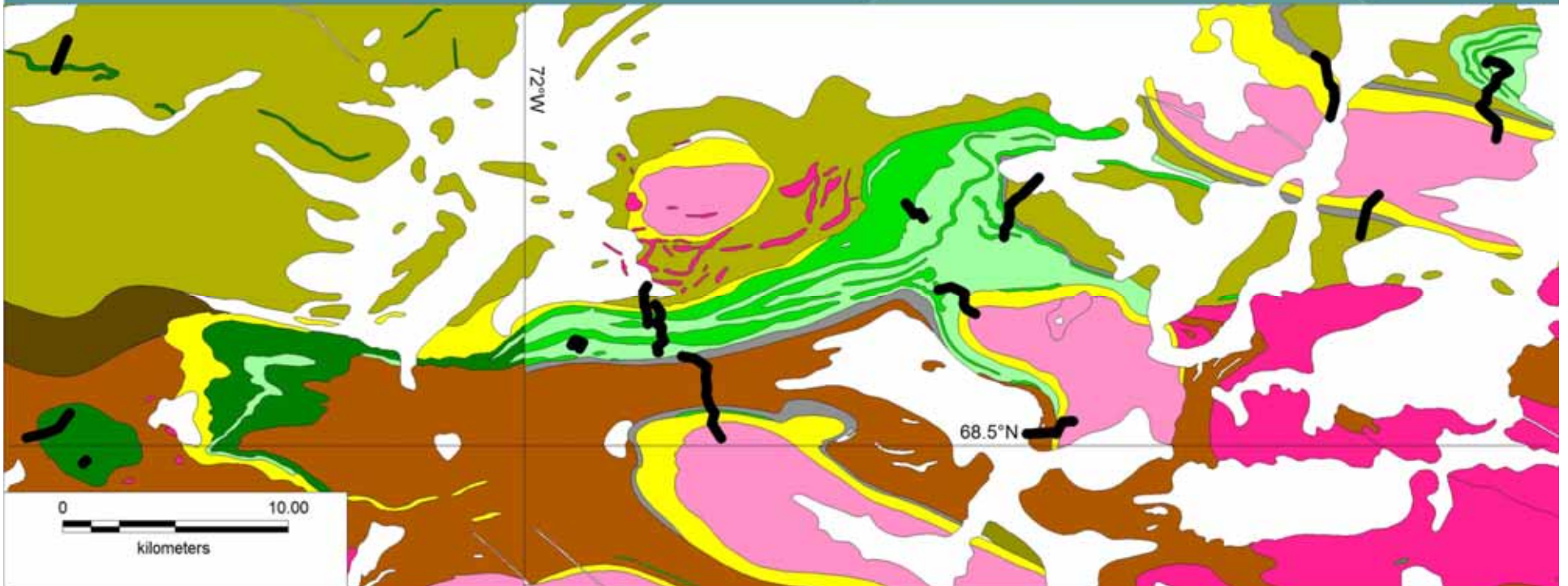


Regional Issues

- **Dewar Fm – older and younger than Bravo**
- **Longstaff Bluff Fm – older and younger than Bravo**
- **Importance of regional thrusting?**



Regional Traverses 2010





High Powered Help

- **Commander**

Dr. Stefan Kruse, Alan Sexton (GeoVector)

- **AngloGold Ashanti**

Dr. Rodney Holcombe (U of Brisbane), Mauricio Valencia

- **Laurentian University**

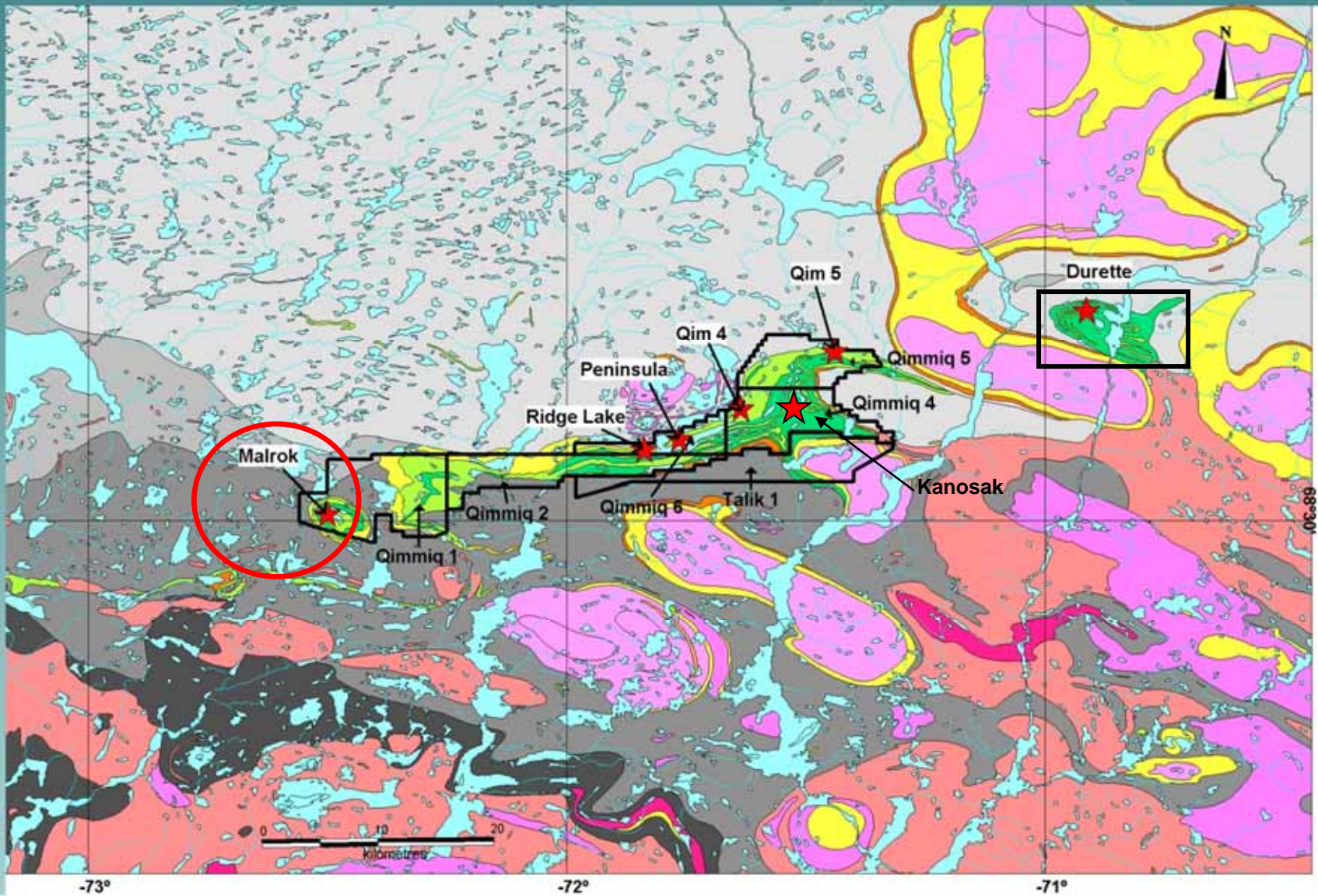
Kate Rubingh (Dr. Bruno LaFrance)

- **University of Manitoba**

Camille Partin (Dr. Andrey Becker)



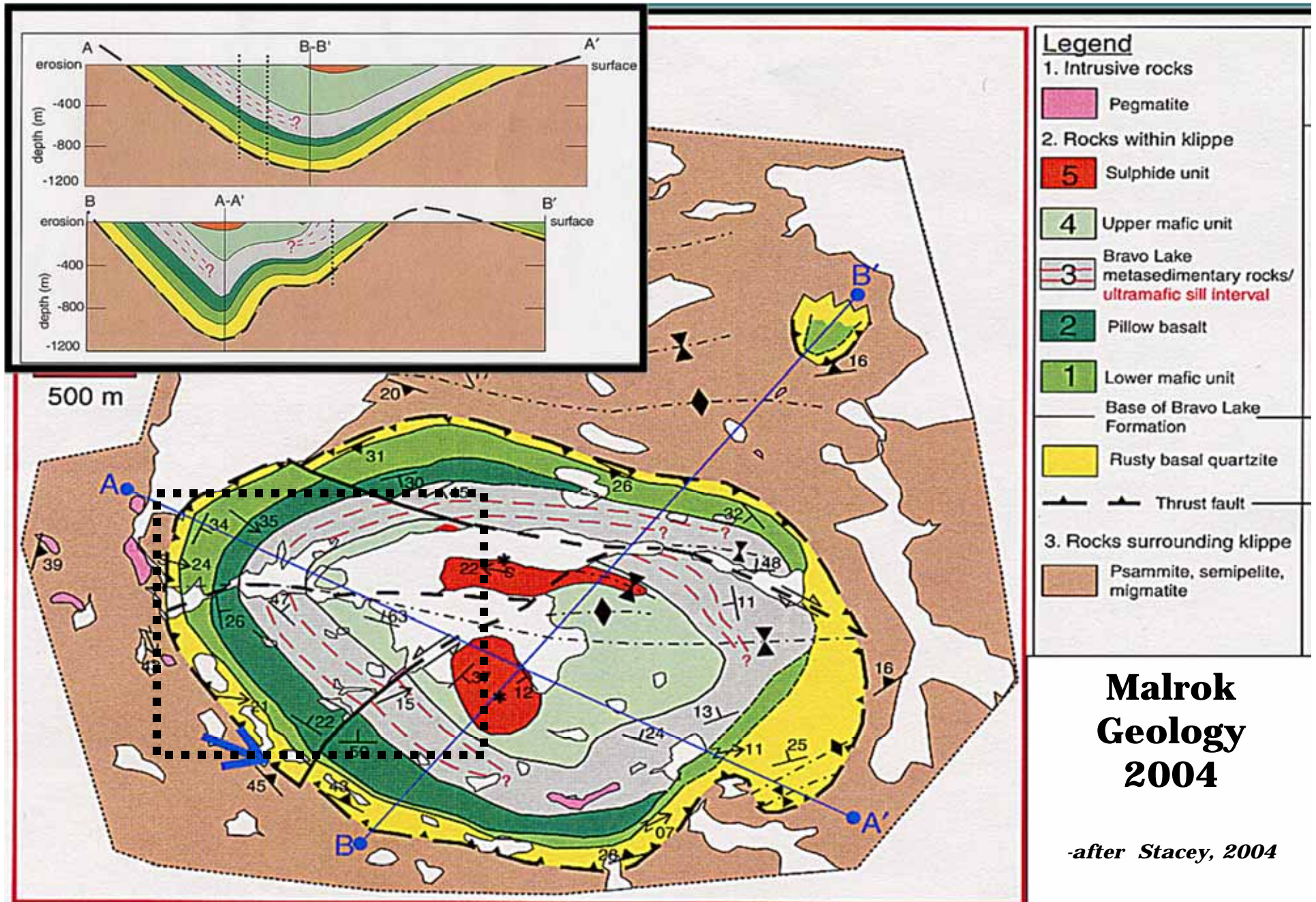
BAFFIN GOLD PROPERTY – CENTRAL PORTION



-73°

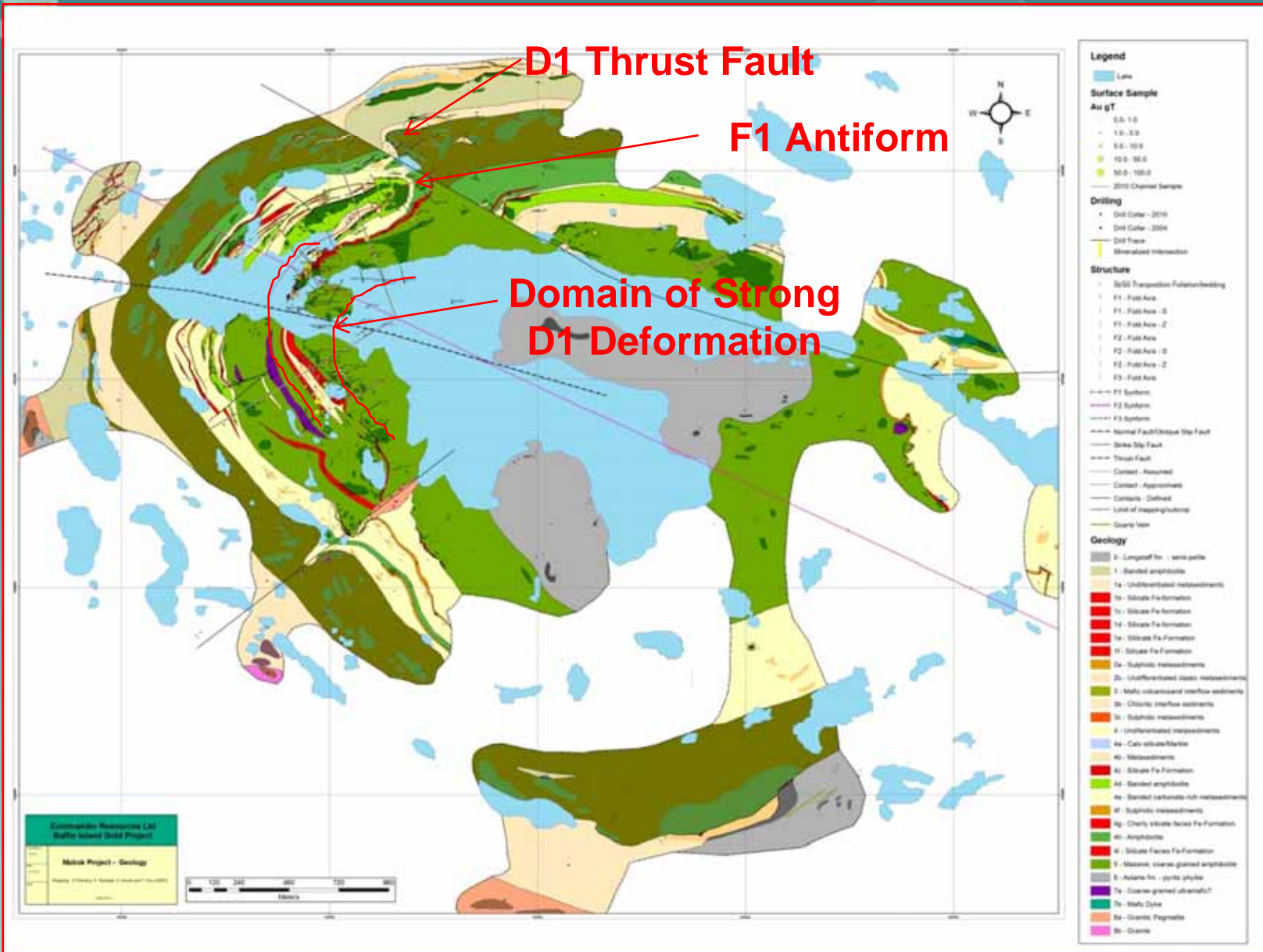
-72°

-71°





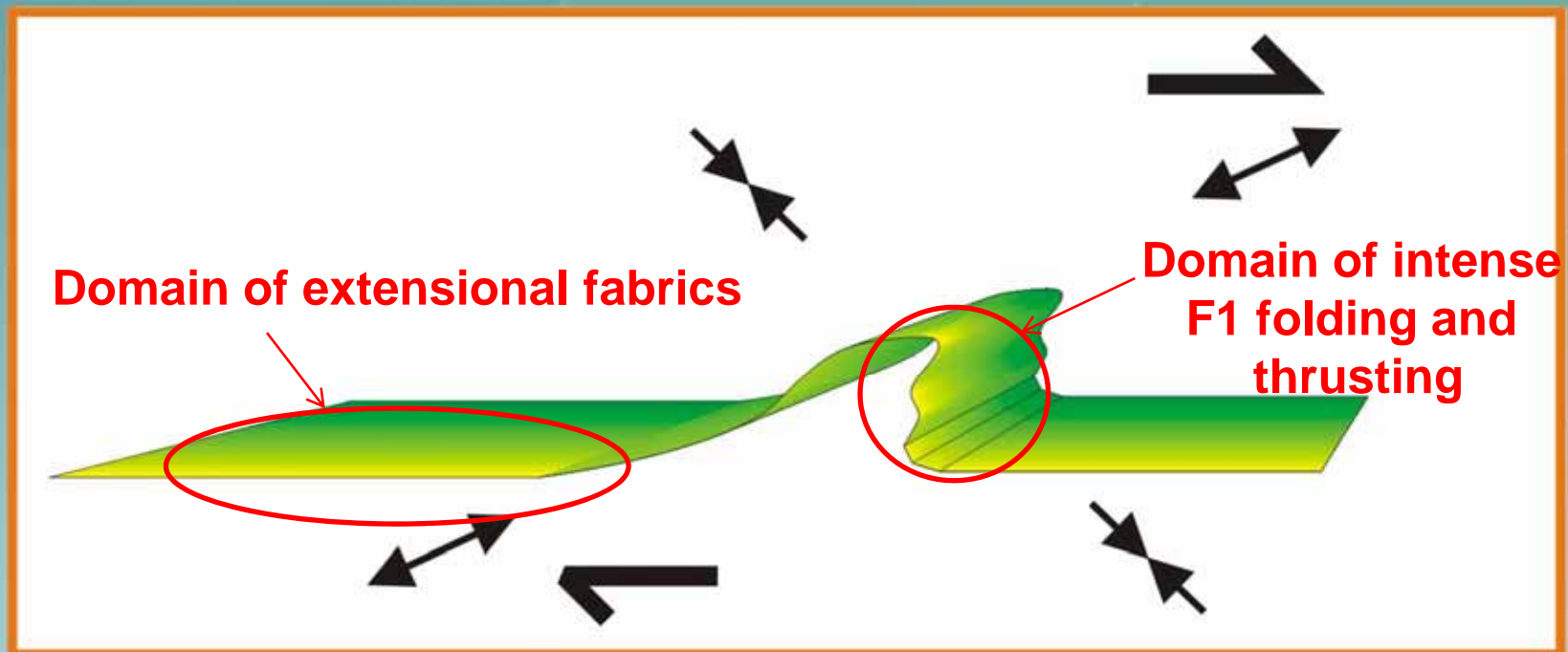
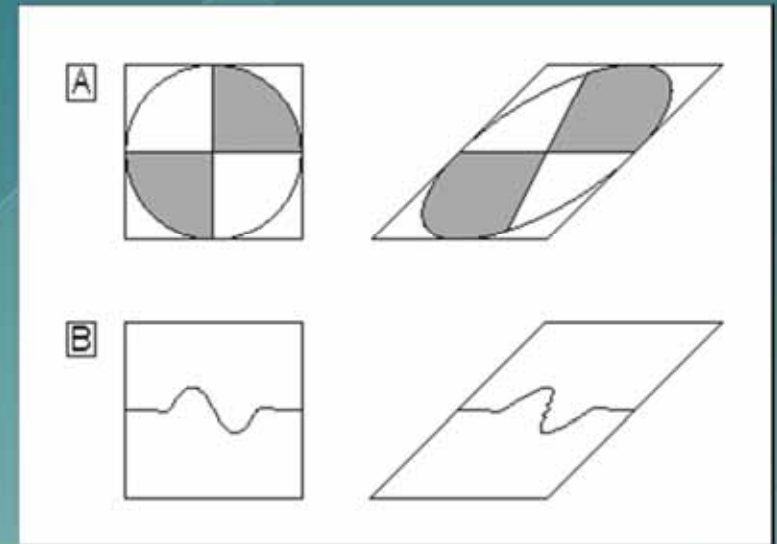
D1 - N to NW Crustal Shortening





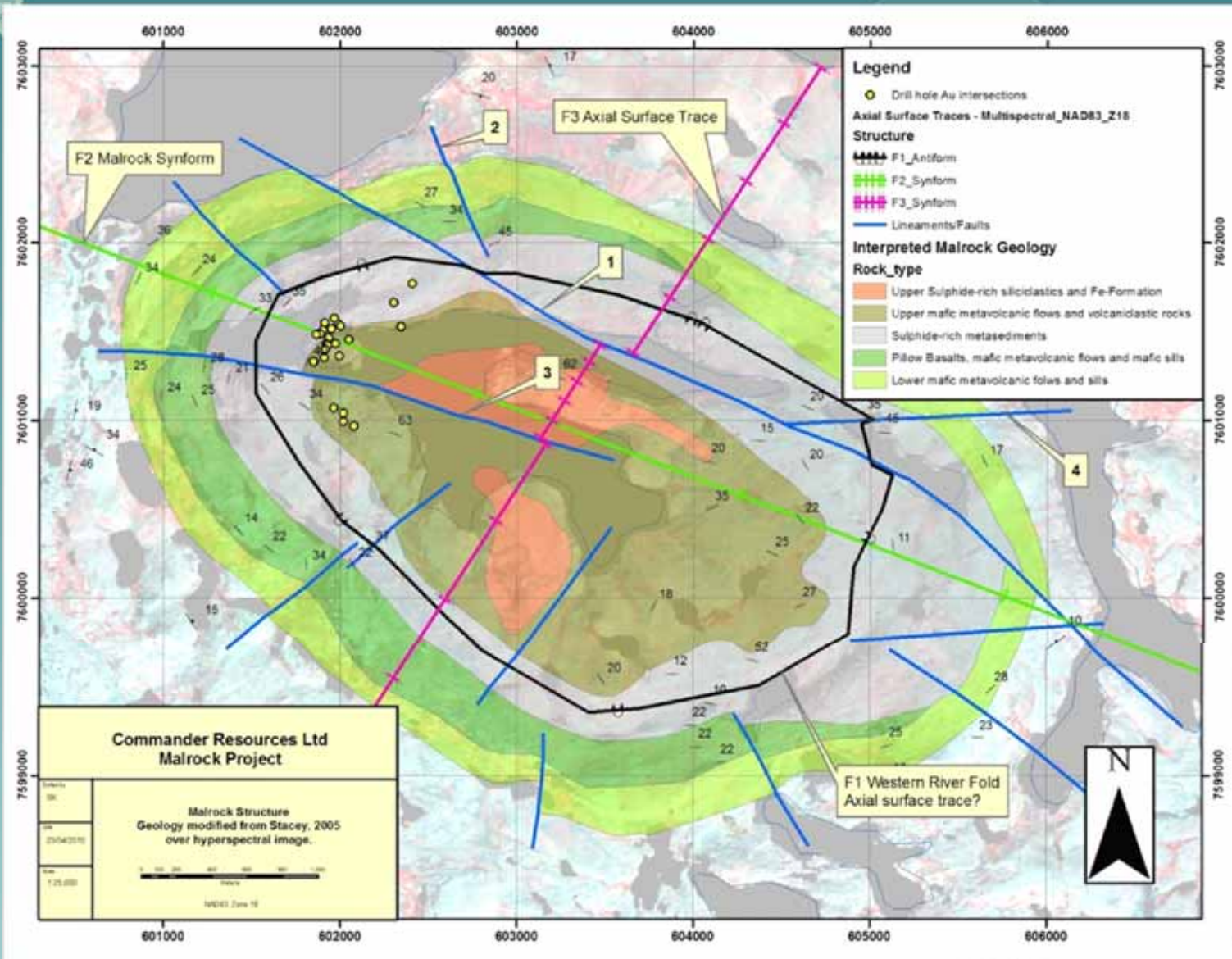
D1 - Kinematics

- Zones of intense folding and transposition develop in fold limbs, oriented at a high angle to the finite shortening direction during top-to-the-NW shear.
- Fold limbs oriented within the stretching direction during top-to-the-NW shear develop extensional fabrics.





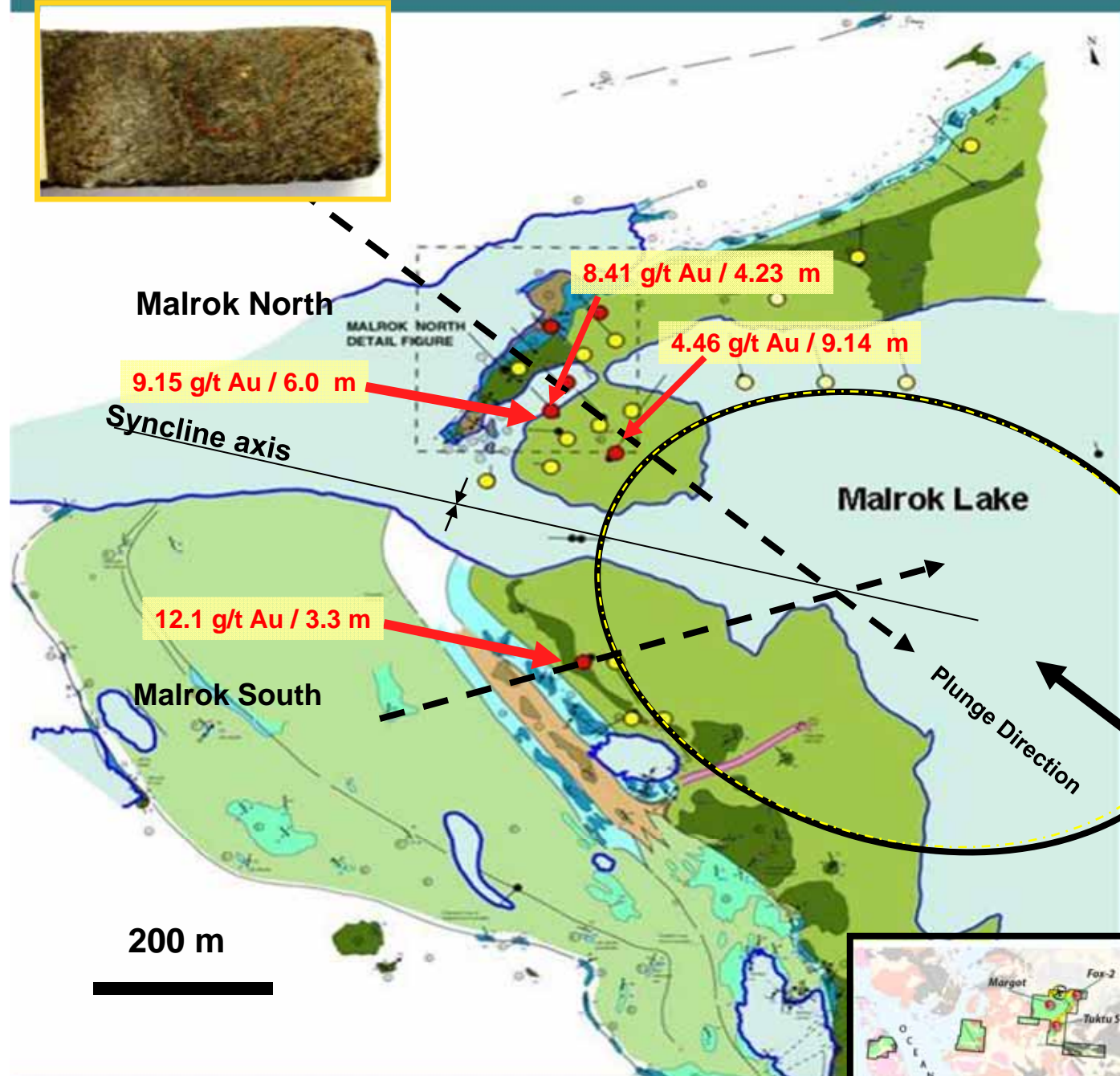
D2 - Regional NE-SW shortening





Malrok Zone

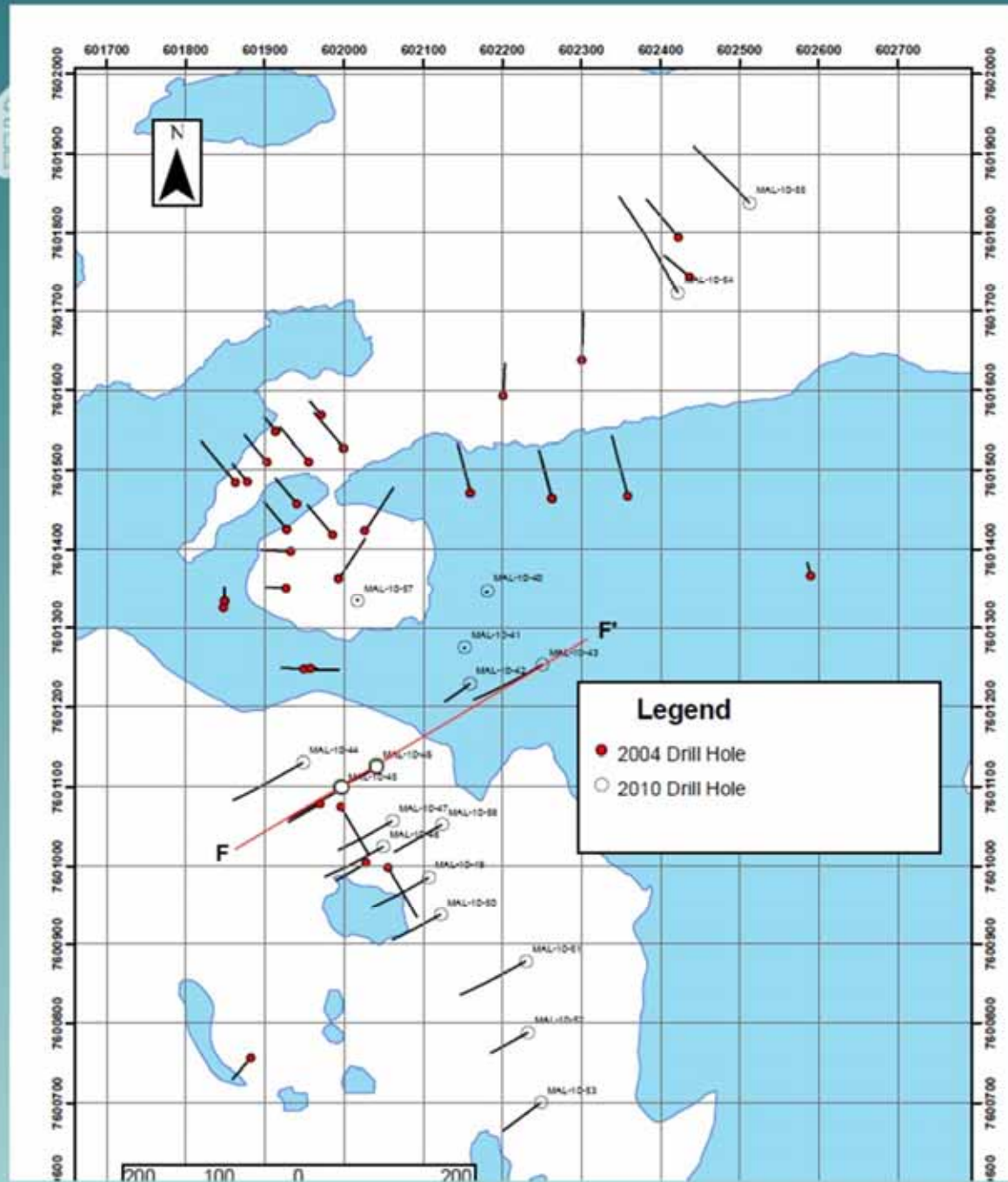
- Silicate Iron Formation host
- Within 60 m of surface
- System is open



AREA OF 2010 DRILLING

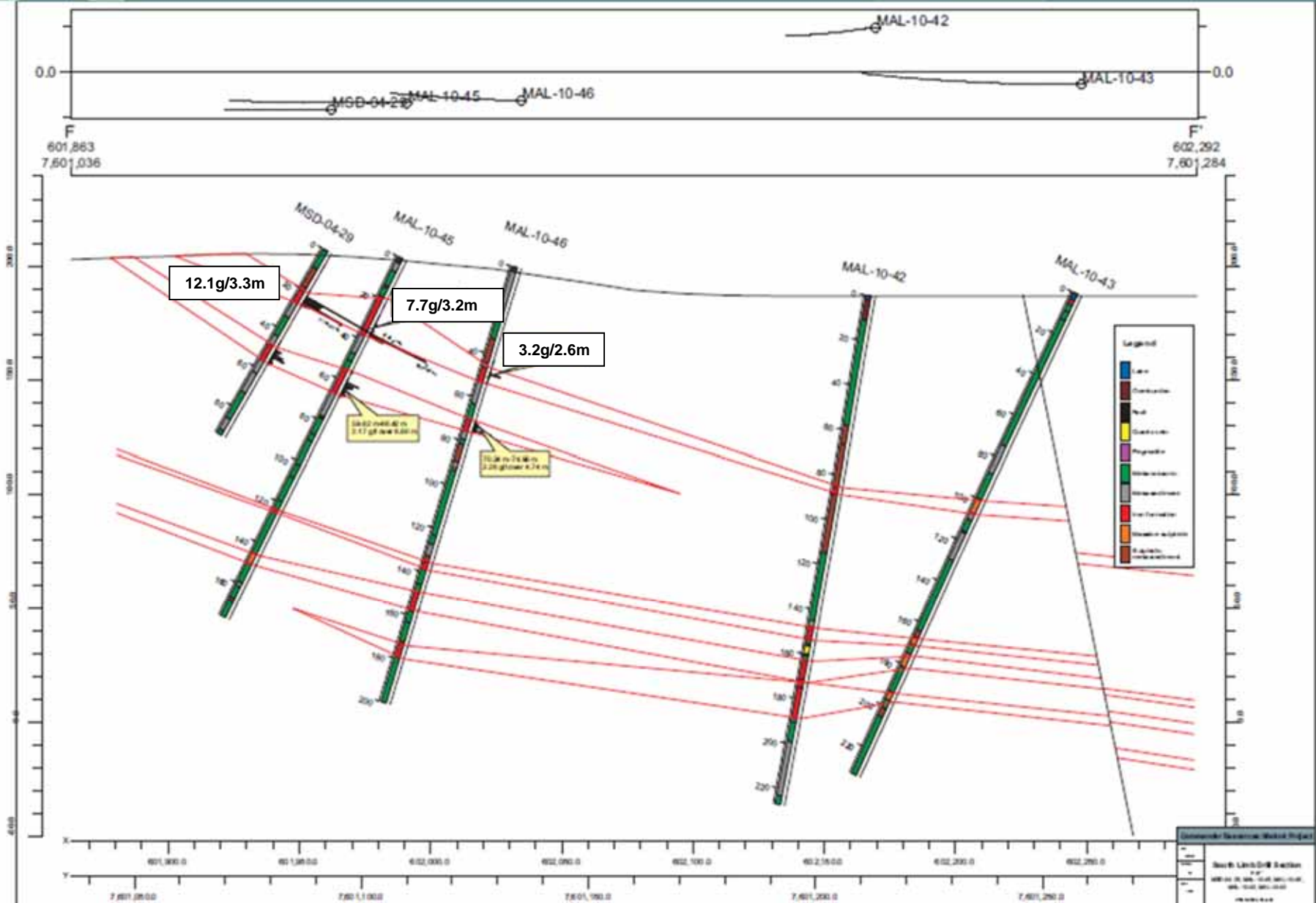


Malrok Drilling - 2010



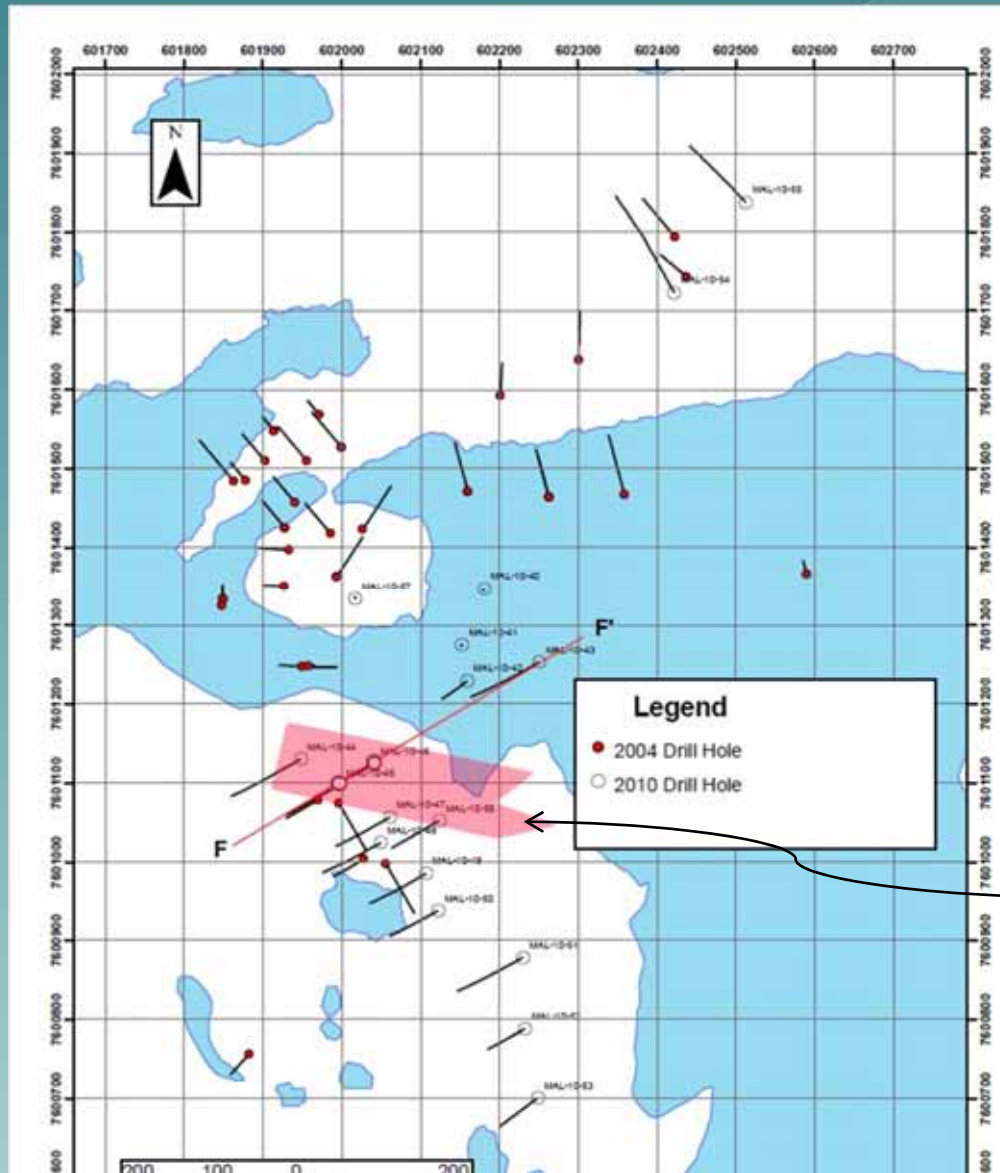


Malrok Section F-F'





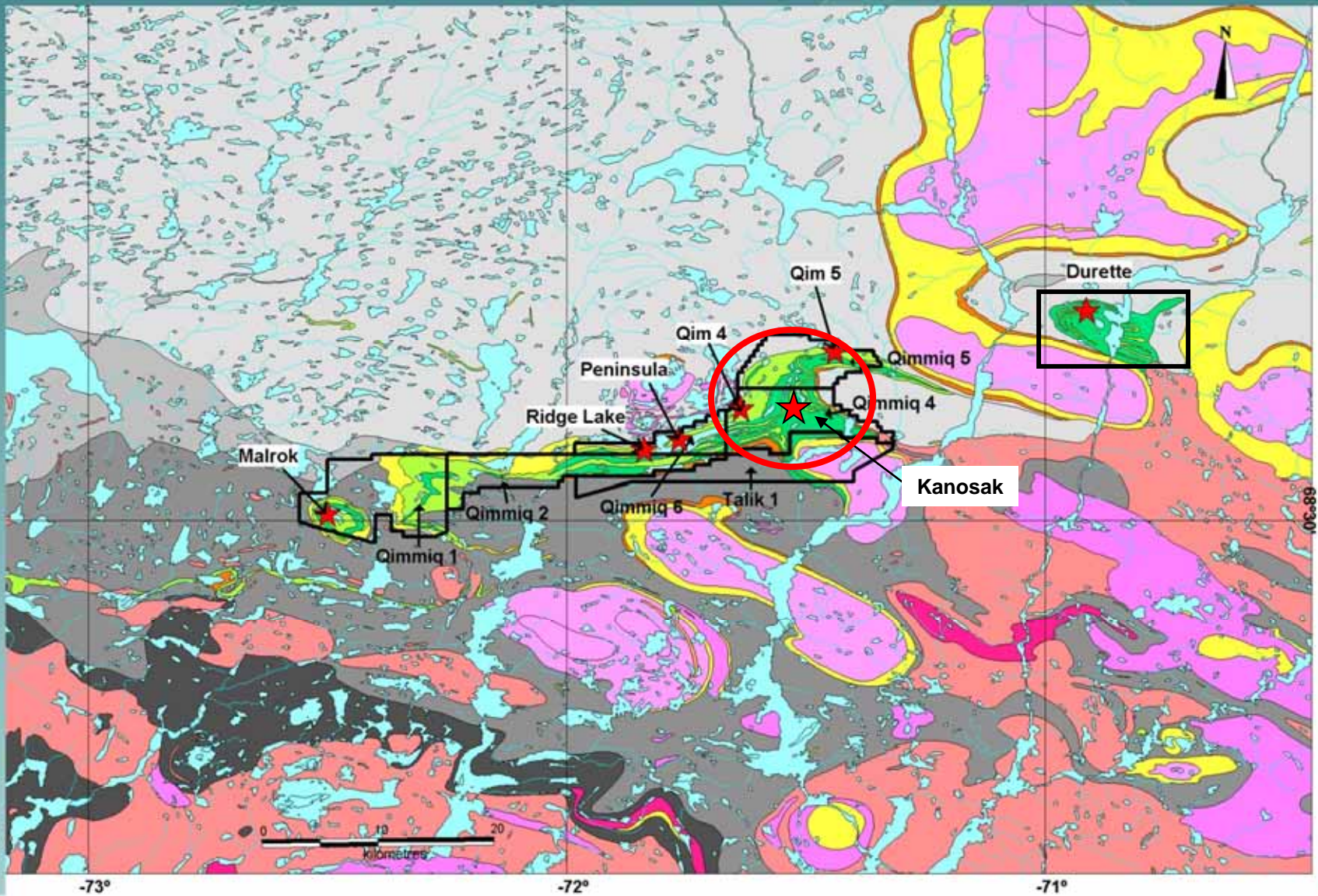
Malrok South Zone Projection



**Zone Open
Down plunge To
East**



BAFFIN GOLD PROPERTY - CENTRAL PORTION

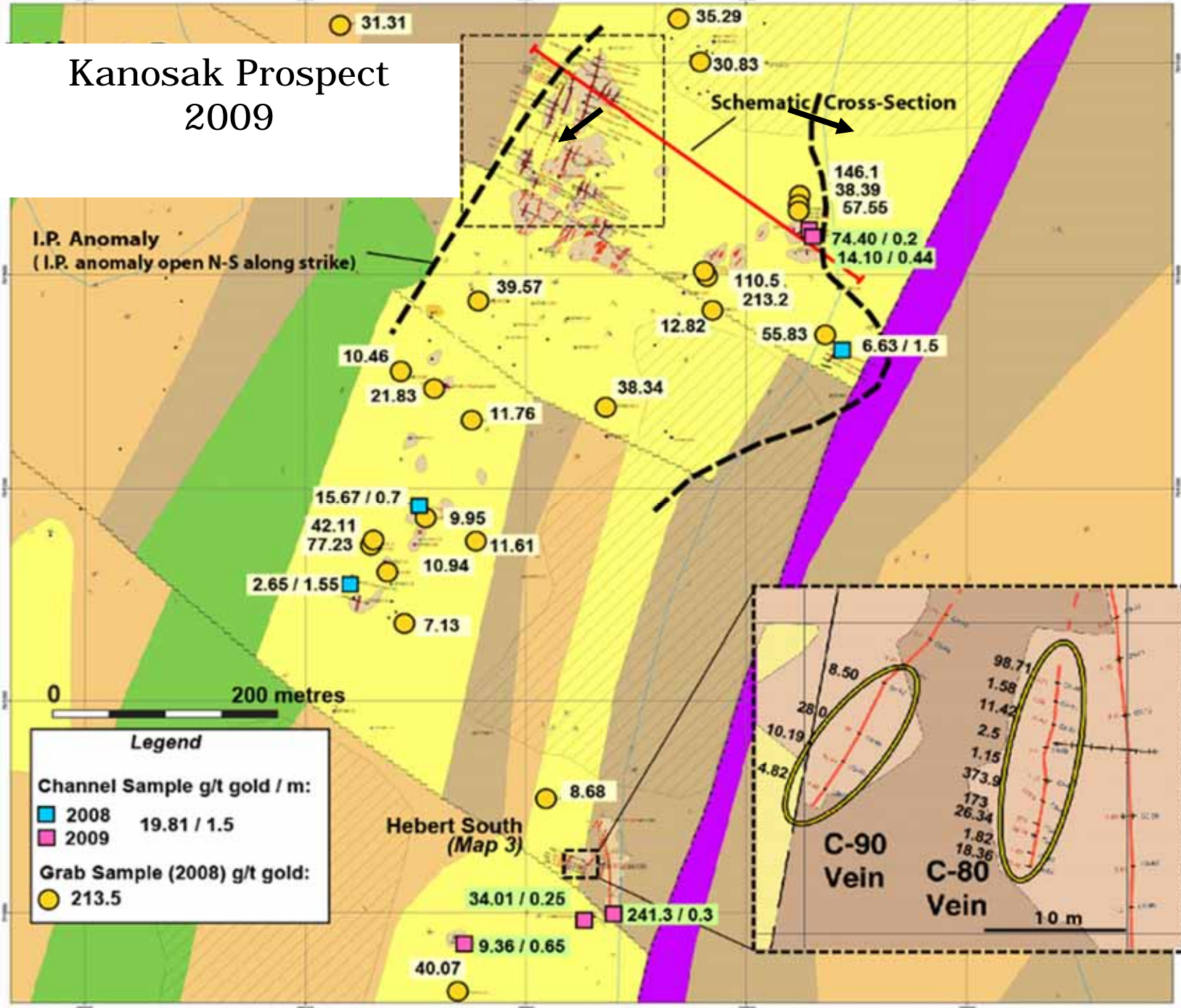


-73°

-72°

-71°

Kanosak Prospect 2009



31.31

35.29

30.83

146.1

38.39

57.55

74.40 / 0.2

14.10 / 0.44

110.5

213.2

12.82

55.83

6.63 / 1.5

10.46

21.83

11.76

38.34

15.67 / 0.7

42.11

77.23

9.95

11.61

10.94

2.65 / 1.55

7.13

8.68

34.01 / 0.25

40.07

9.36 / 0.65

241.3 / 0.3

8.50

28.0

10.19

4.82

98.71

1.58

11.42

2.5

1.15

373.9

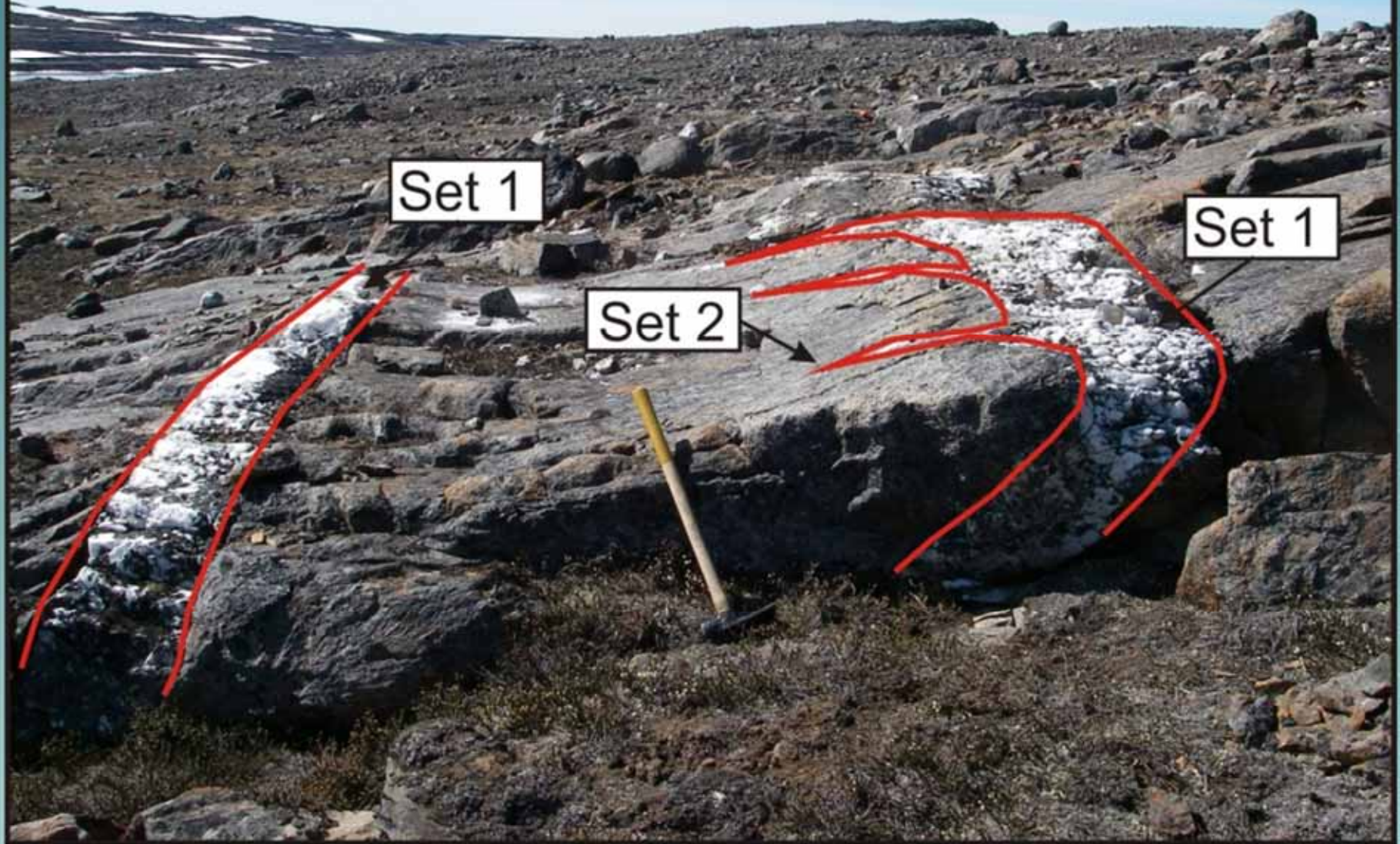
173

26.34

1.82

18.36

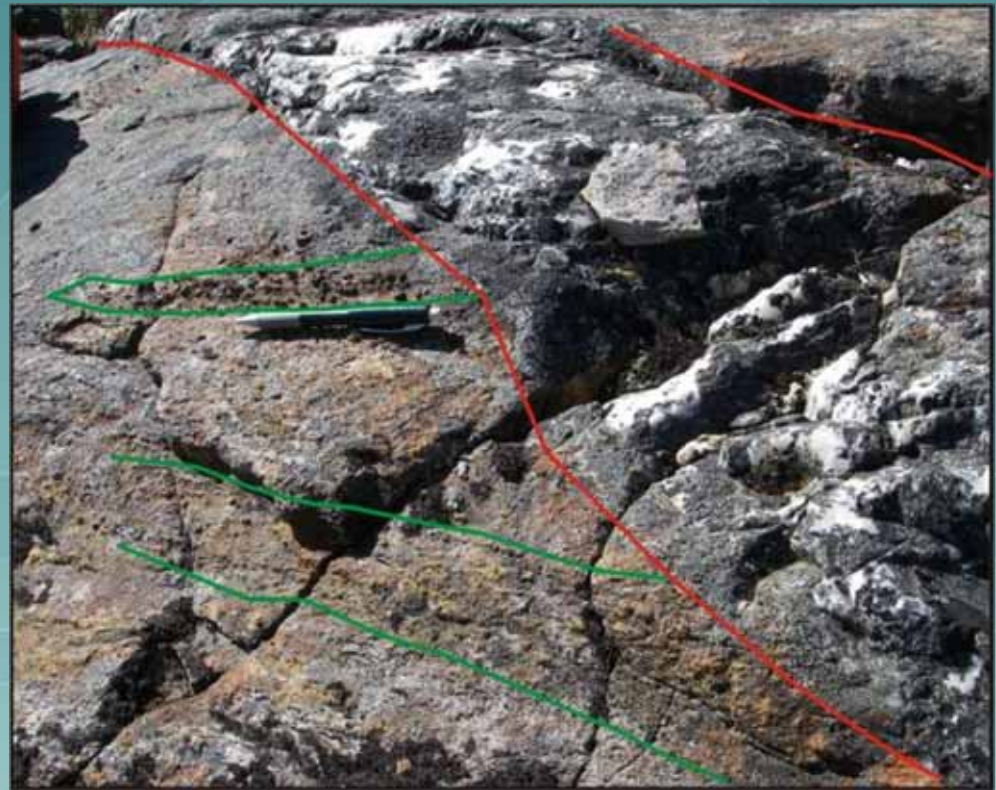
A





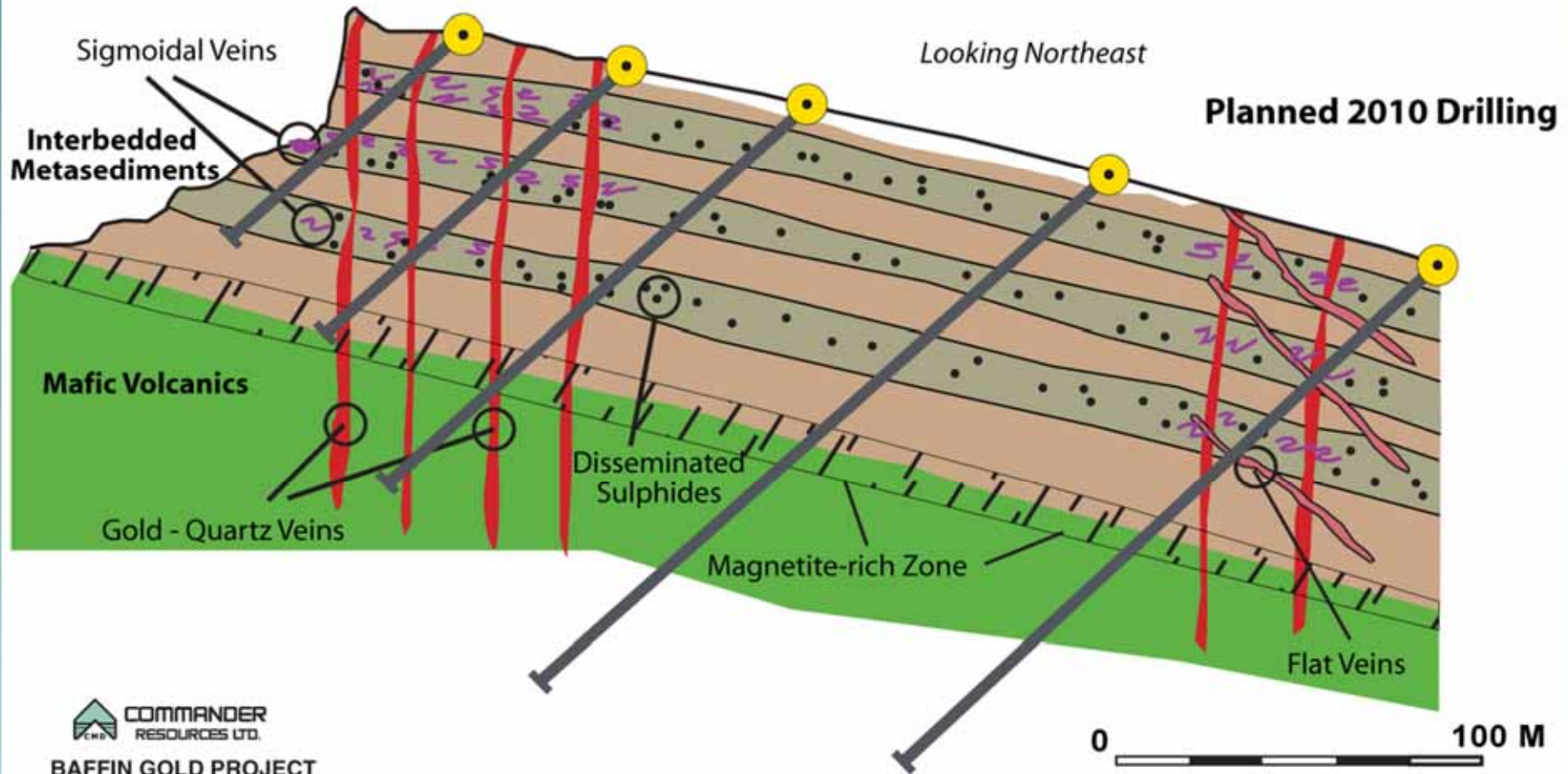
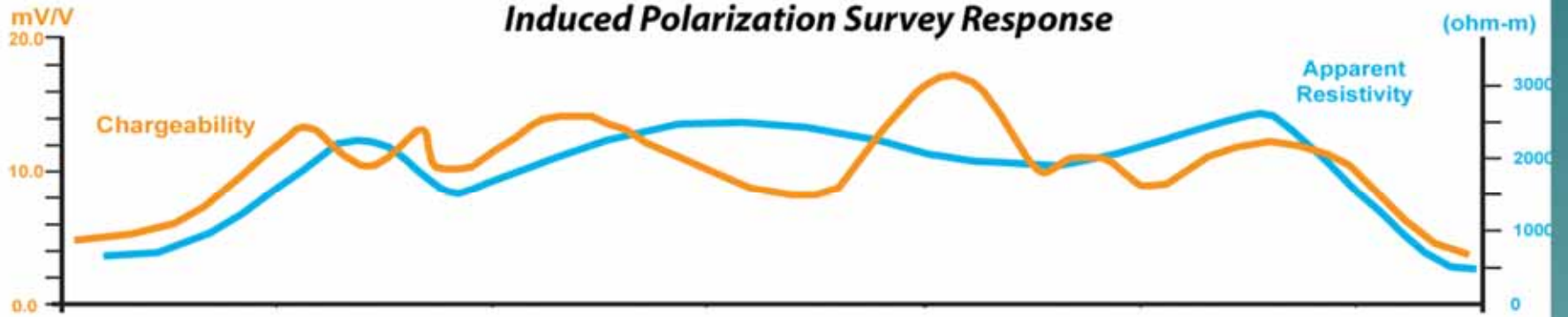
Mineralization

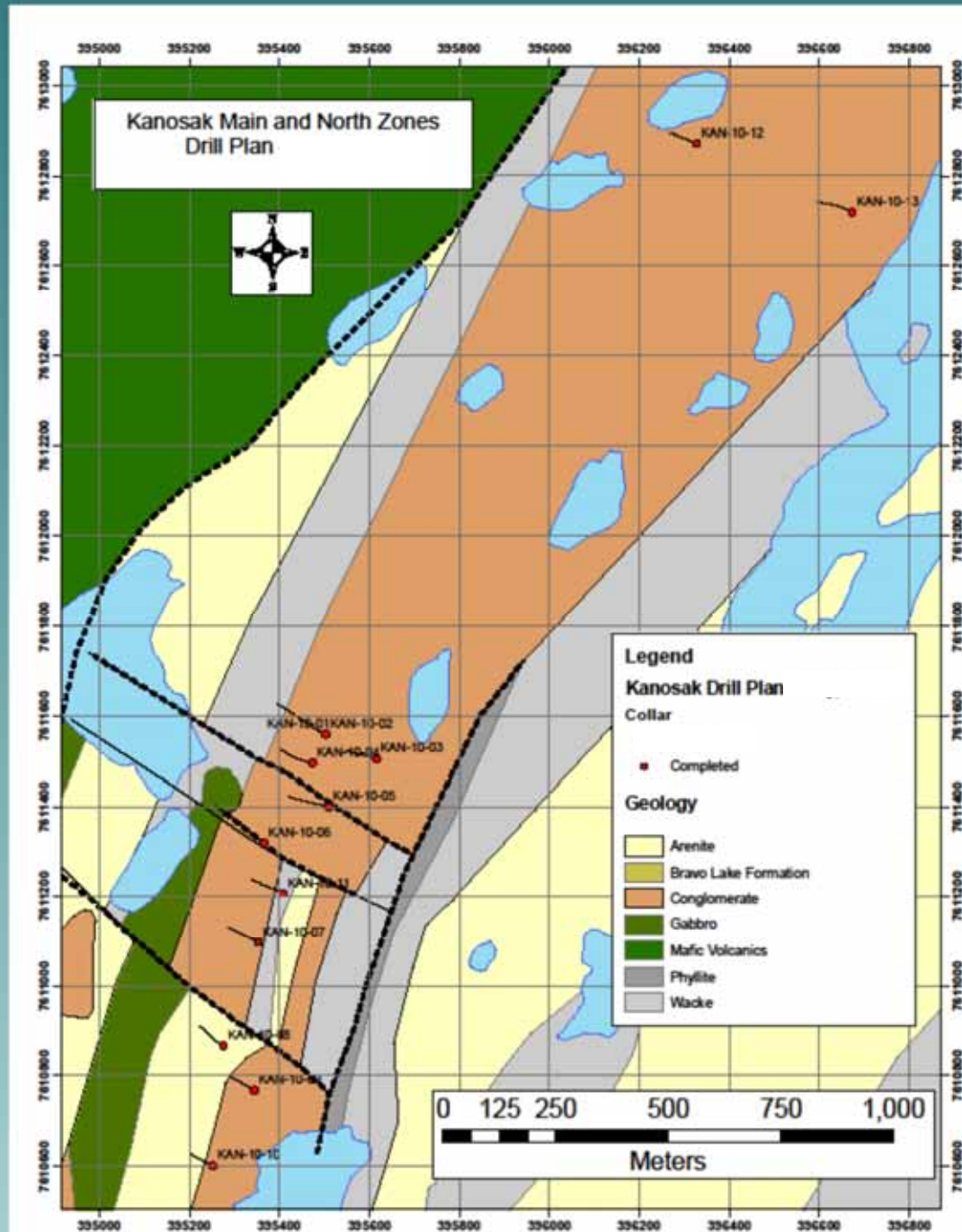
- Coarse-grained aspy is spatially coincident with Au mineralization.
- Occurs in coarse-grained horizons within the Kanosak sediments - best developed adjacent to quartz veins.
- Highest Au grades are found directly in quartz veins, but the bedding parallel zones offer the best continuity of mineralization.



Schematic Cross-Section Kanosak Zone - 2009

Induced Polarization Survey Response

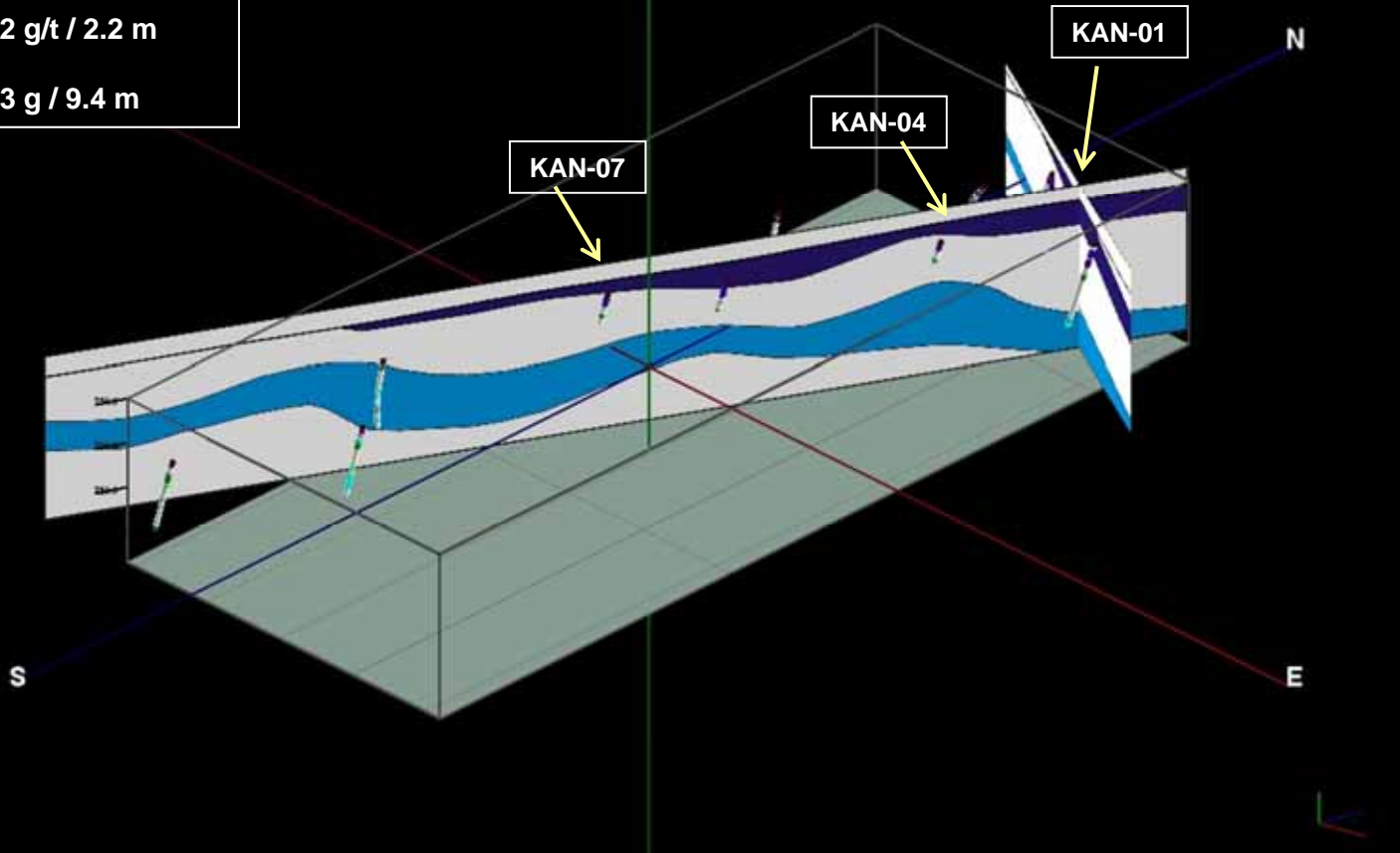




Upper and Lower Zones - View to NW

KAN-01: 1.6 g/t / 4.6 m
KAN-04: 4.2 g/t / 2.2 m
KAN-07: 2.3 g / 9.4 m

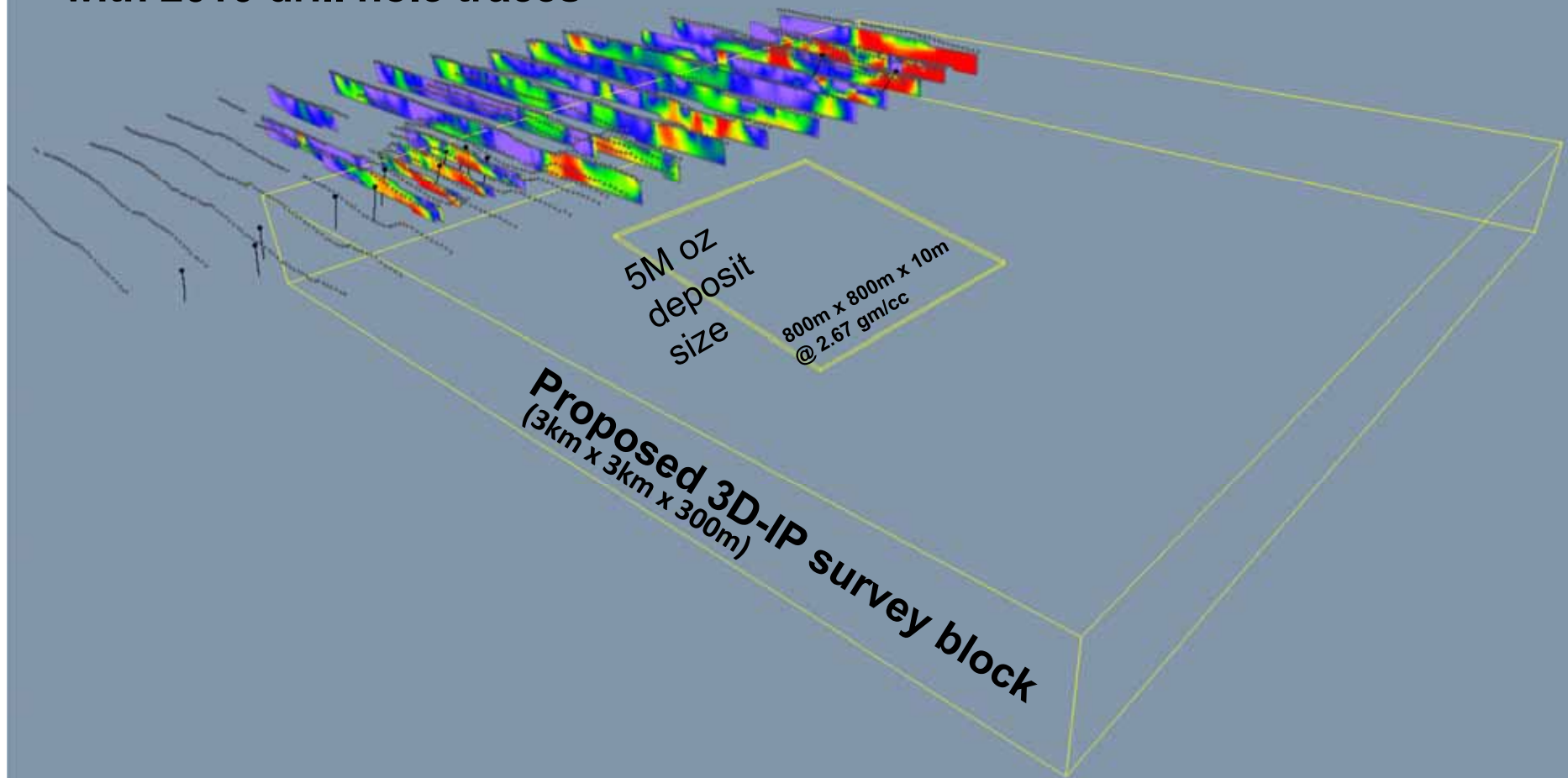
- Geology
- CSIL
 - FLT
 - LAKE
 - MCGL
 - METS
 - MGL
 - MVOL
 - OVB
 - PCGL
 - PEGT
 - QV
 - SEDS
 - UND





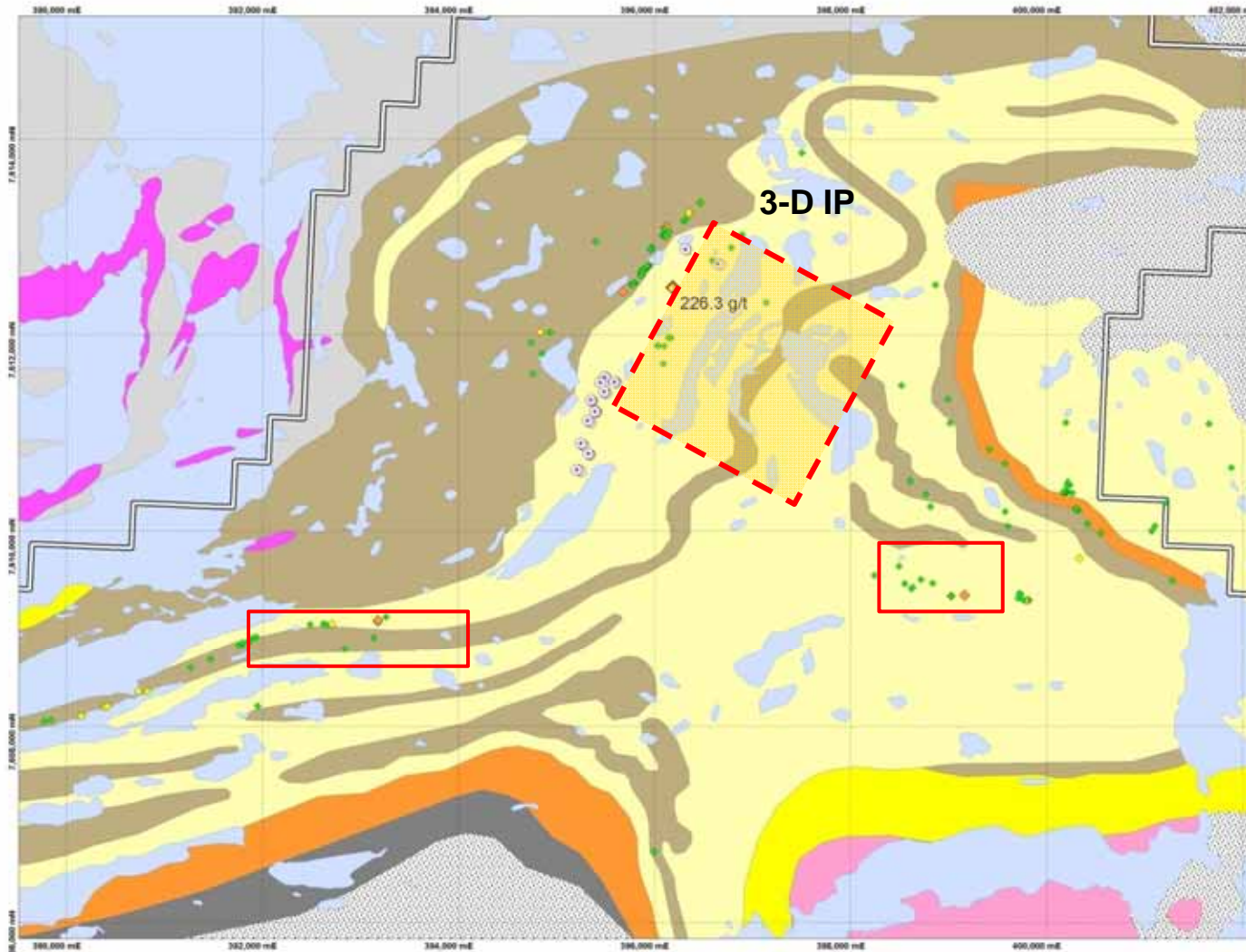
Proposed 2011 Kanosak 3D-Res-IP Survey

Kanosak 2009 / 2010 IP inversion model sections shown with 2010 drill hole traces





Kanosak Area – Additional Targets



Legend

2010 Prospecting Au (ppb)

- 20,000 to 227,000 (1)
- 5,000 to 20,000 (5)
- 1,000 to 5,000 (19)
- 0 to 1,000 (114)

- 2010 Kanosak Drill Collars

Regional Geology

- Quaternary
- Intrusives
- Astarte River Formation
- Dewar Lakes Formation
- Longstaff Bluff Formation
- Bravo Lake Formation



Baffin Island Gold Project

2010 Prospecting

NAD 83 Zone 19 (UTM)

Scale 1:50,000



CMD – GOING FORWARD

- **Ongoing commitment to Baffin Gold Project with summer surface exploration program - funded by AngloGold**

- **Planning on late 2011 or 2012 drilling program**