

actüa

Learning for Change.
Découvrir pour demain.



Inspiring a Northern Workforce

Actua's Mission

Through life-changing science, engineering and technology experiences, Actua inspires ALL youth to achieve their potential and fulfill their critical role in the world.

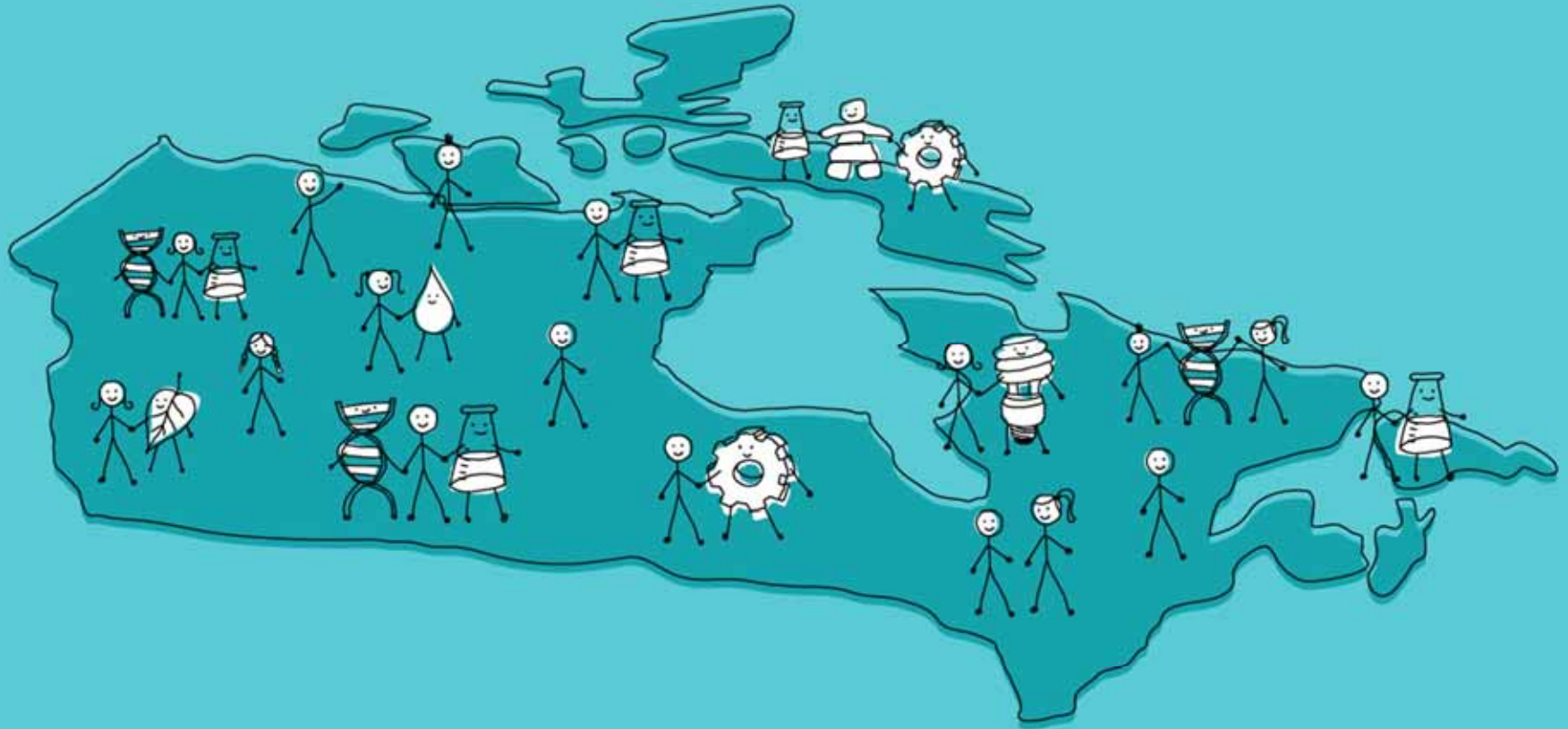


Experiences with Impact!

- School **workshops**
- Week-long **camp**s
- **Early age (7-15)**
BEFORE career decisions are made!



Geographic footprint



Sustainable Program Delivery in Every Province and Territory!

actüa
Learning for Change-
Découvrir pour demain.



Youth model works!

Breaking Barriers

Actua invests heavily in the development of programs that **break down barriers to youth engagement in science, engineering and technology.**

Make a contribution to the development of a **strong and diverse Canadian workforce**



National Aboriginal Outreach Program

- Addressing **significant disparities** in representation
- Connecting Aboriginal youth to **many opportunities**
- Making careers **accessible, relevant** and **FUN!**



Community-based Approach

- Partnerships with Aboriginal community organizations
- Programming fully subsidized
- Engagement of Aboriginal Elders and/or volunteers
- Engagement of Aboriginal Scientists/Mentors



Local Relevance

- Context and relevance
- Local Elders and/or volunteers make connections
- Local scientists and researchers

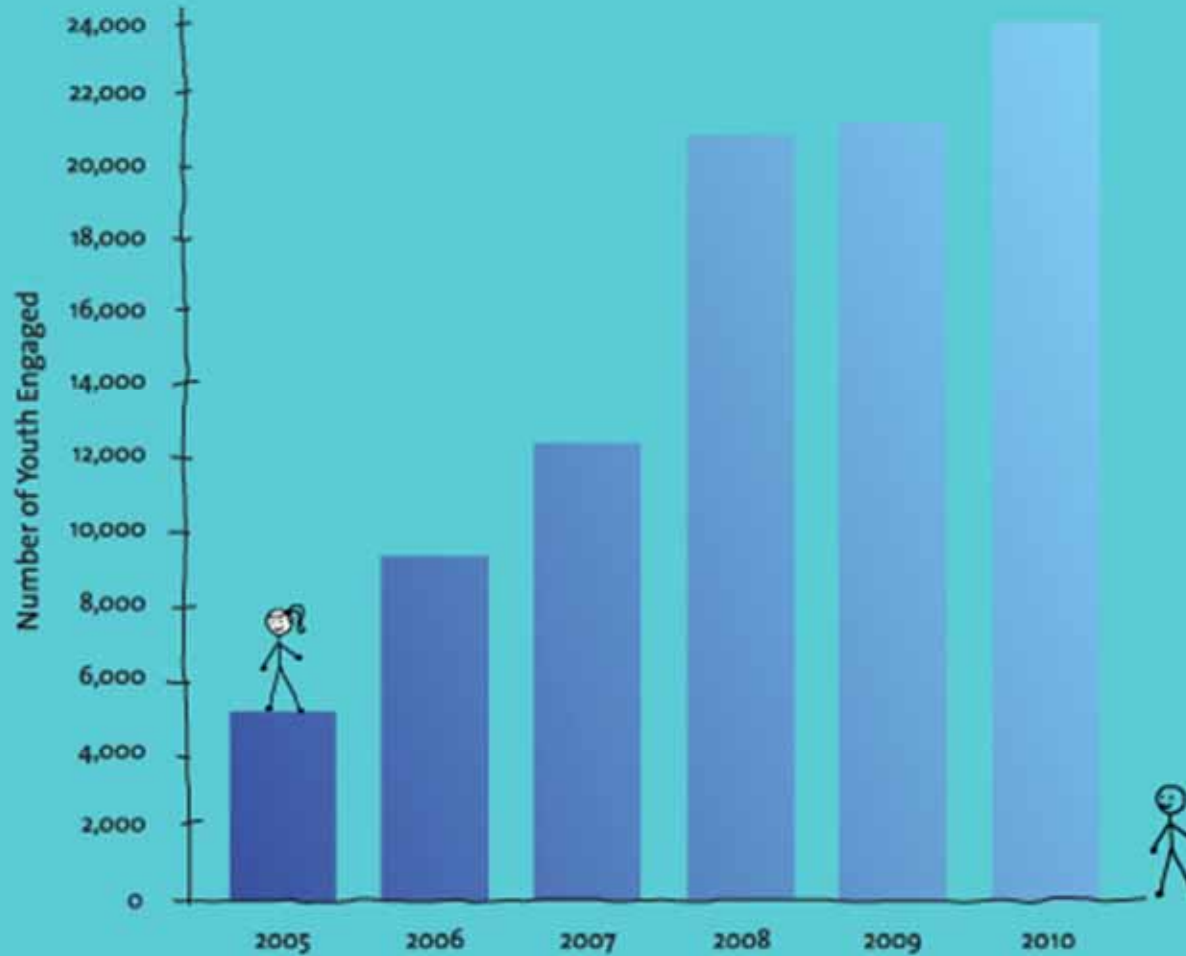


actüa

Learning for Change.
Dépasser pour demain.

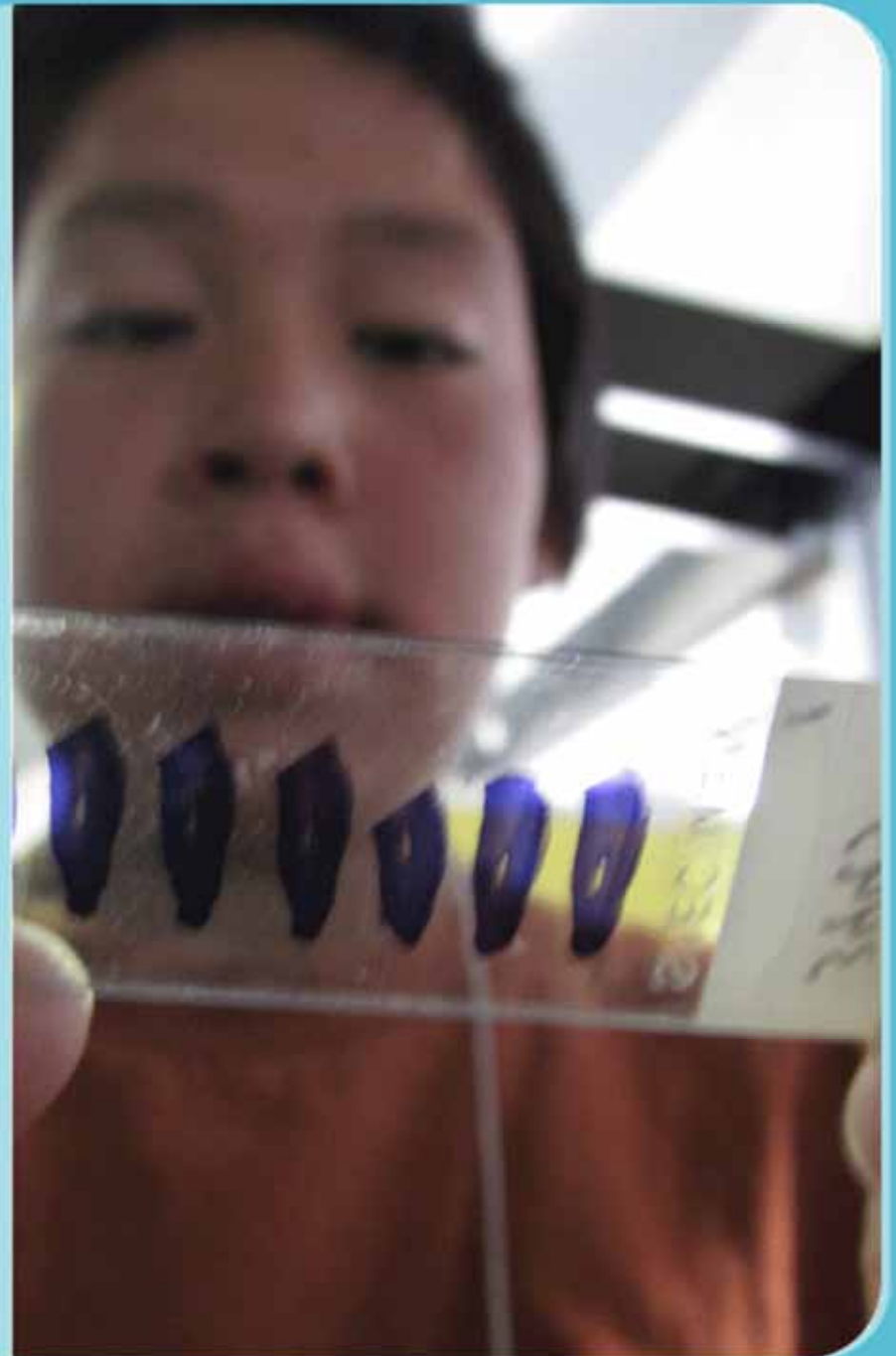


Aboriginal Outreach



Nunavut Communities

Apex, Arviat, Baker Lake,
Cambridge Bay, Chesterfield
Inlet, Coral Harbour, Gjoa
Haven, Hall Beach, Igloolik,
Iqaluit, Kimmirut, Kugaaruk,
Kugluktuk, Pangnirtung,
Pond Inlet, Qikitarguaq,
Rankin Inlet, Repulse Bay,
Whale Cove



Local Partners

- Nunavut Arctic College
- Nunavut Research Institute
- Qikiqtani Inuit Association

- Nunavut Department of Economic Development and Transportation
- Nunavut Department of Health and Social Services
- CanNor



Traditional Knowledge

- A way to make our programming more relevant to the Aboriginal youth Audiences we engage.
- Key is involvement of local Aboriginal Elders, volunteers and/or mentors.



Structure of a camp

- Welcome, warm-up activities
- Demonstrations
- Hands-on activities
 - Individual
 - Group
 - Take-home
 - Single activities and full-week project
- Problem solving, challenge
- Physical activity
- Mentor event/Engagement of Elder or volunteer
- Closing ceremony/Open House event



Essential Skills

- Build math/science literacy skills
- Problem solving
- Collaboration and team building
- Self confidence



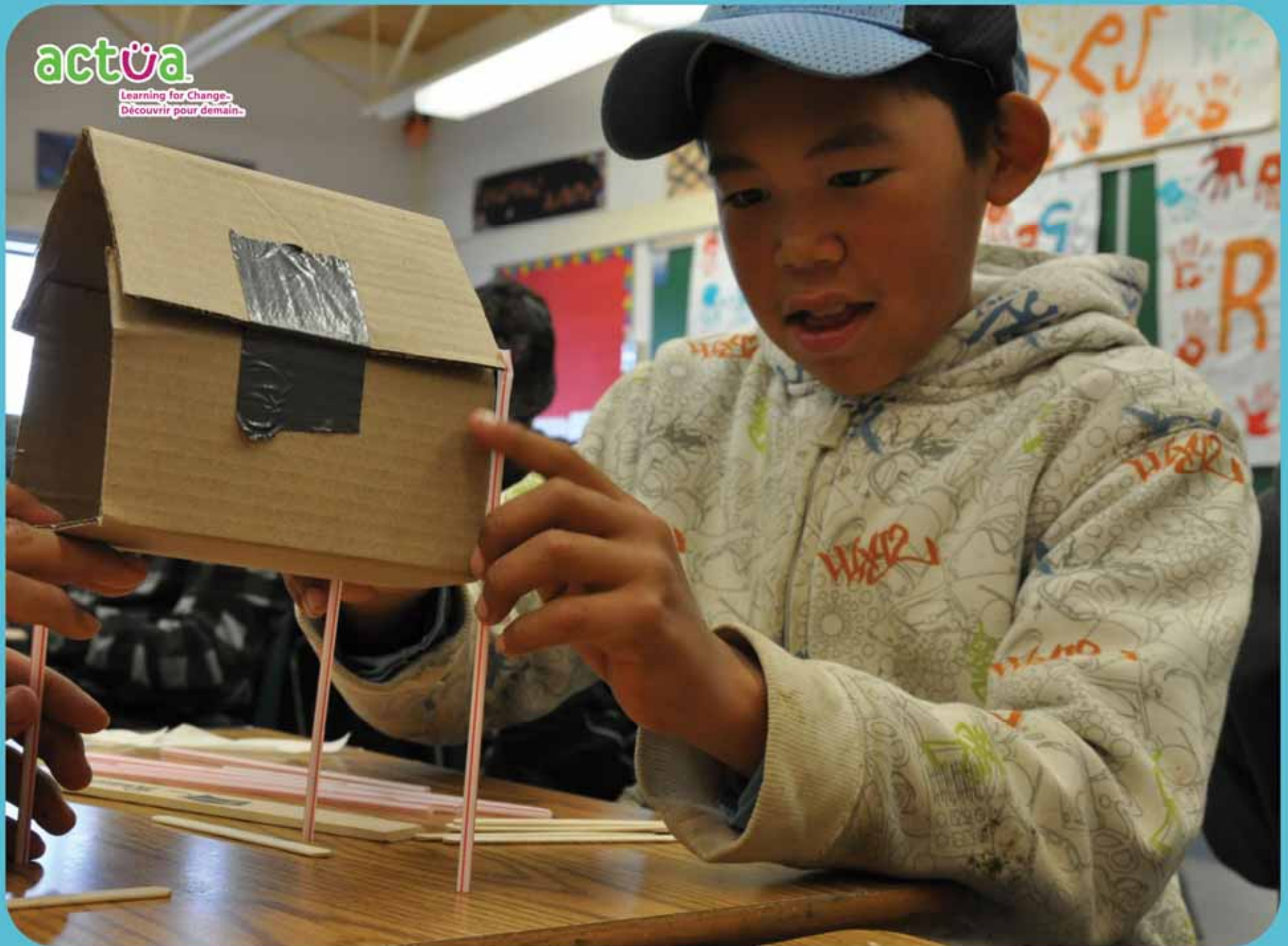
actüa

Learning for Change.
Okauneri pour demain.



actüa

Learning for Change-
Découvrir pour demain-





actüa

Learning for Change.
Découvrir pour demain.



actua
Learning for Change.
Découvrir pour demain.



actüa
Learning for Change.
Découvrir pour demain.



actüa

Learning for Change.
Diketahui pour demain.



actüa

Learning for Change.
Découvrir pour demain.



actüa

Learning for Change.
Découvrir pour demain.



actüa

Learning for Change.
Découvrir pour demain.

believe



Results and Impact

- 83% more confident in SET
- 84% increased enjoyment
- 84% do better in school
- 75% more likely to take science in high school
- 74% more likely to study science in university



actüa

Learning for Change.
Découvrir pour demain.

Cornerstone



imagination at work



Canadian Northern Economic
Development Agency

Agence canadienne de
développement économique du Nord

Ambassador

THE ONTARIO
TRILLIUM
FOUNDATION



LA FONDATION
TRILLIUM
DE L'ONTARIO

SUNCOR
ENERGY

SUNCOR
ENERGY
FOUNDATION



NSERC
CRSNG



Founding Sponsor
Aboriginal Outreach Program



SYNAPS
DSP



Health
Canada

Santé
Canada

Major Patron



VALE



RBC Foundation*
RBC Fondation*



Patron



Imperial Oil
Foundation



CANADIAN
WOMEN'S
FOUNDATION

L'ORÉAL
Founding Partner
Oris Membership Program



The GlassBreaker
Foundation



Newfoundland
Labrador

nwmo
NORTHWEST
MOUNTAIN
ORGANIZATION

Friend

Celestica

Maurice Price Foundation

Google

CropLife Canada

Canada Foundation for Innovation

The Winnipeg Foundation

Areva

denotes a 10-year partnership

actüa

Learning for Change.
Découvrir pour demain.

