



PEREGRINE
DIAMONDS LTD.

**THE CHIDLIAK DIAMOND DISTRICT,
NUNAVUT:
AN EXPLORATION UPDATE**

2011 Nunavut Mining Symposium. Thursday, April 7

TSX:PGD
www.pdiam.com

FORWARD LOOKING STATEMENT

Forward-Looking Statements: This presentation contains forward-looking statements. All statements, other than statements of historical fact, that address activities, events or developments that the Company believes, expects or anticipates will or may occur in the future (including, without limitation, statements relating to the proposed exploration program, funding availability, anticipated exploration results, resource estimates, and future exploration and operating plans) are forward-looking statements. These forward-looking statements reflect the current expectations or beliefs of the Company based on information currently available to the Company. Forward-looking statements are subject to a number of risks and uncertainties that may cause the actual results of the Company to differ materially from those discussed in the forward-looking statements and, even if such actual results are realized or substantially realized, there can be no assurance that they will have the expected consequences to, or effects on, the Company. Factors that could cause actual results or events to differ materially from current expectations include, among other things, uncertainties relating to the availability and cost of funds, timing and content of work programs, results of exploration activities, interpretation of drilling results and other geological data, world diamond markets, future diamond prices, reliability of mineral property titles, changes to regulations affecting the Company's activities, delays in obtaining or failure to obtain required project approvals, any changing budget priorities of BHP Billiton, operational and infrastructure risks, and other risks involved in the diamond exploration business. Any forward-looking statement speaks only as of the date on which it is made and, except as may be required by applicable securities laws, the Company disclaims any intent or obligation to update any forward-looking statement, whether as a result of new information, future events or results or otherwise. Although the Company believes that the assumptions inherent in the forward-looking statements are reasonable, forward-looking statements are not guarantees of future performance and accordingly undue reliance should not be put on such statements due to their inherent uncertainty.

Nanuq North

- 33,100 hectares
- 1 diamondiferous kimberlite to date
- Peregrine 40% interest in 13,900 ha; 50% in 19,200 ha

Nanuq

- 235,600 hectares
- 3 diamondiferous kimberlites to date
- 100% Peregrine

Cumberland

- 527,730 hectares
- Metals targets
- 100% Peregrine

Chidliak

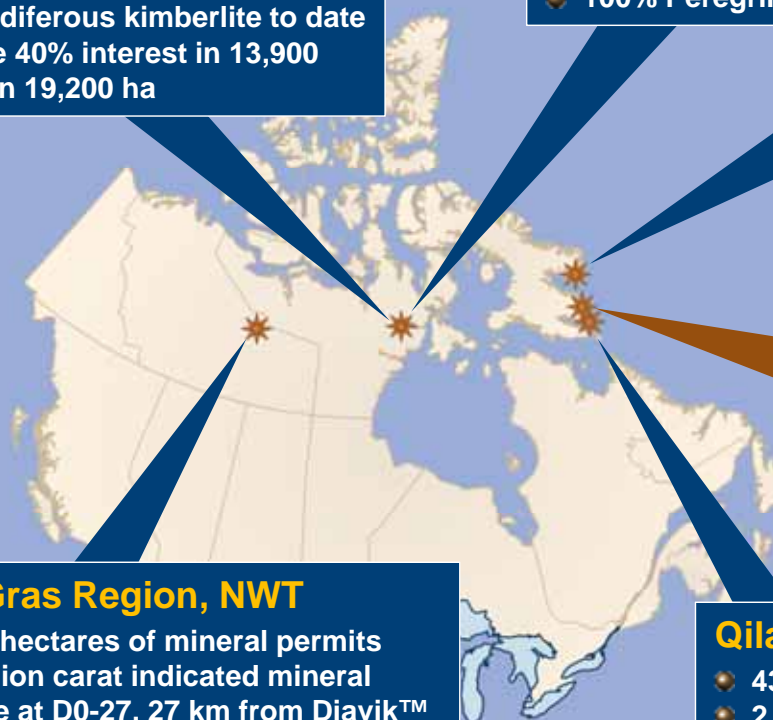
- 858,890 hectares
- 50 kimberlites to date; 7 of 35 tested have economic diamond potential
- 49% Peregrine; 51% BHP Billiton

Lac de Gras Region, NWT

- 111,210 hectares of mineral permits
- 18.2 million carat indicated mineral resource at D0-27, 27 km from Diavik™
- 72% Peregrine

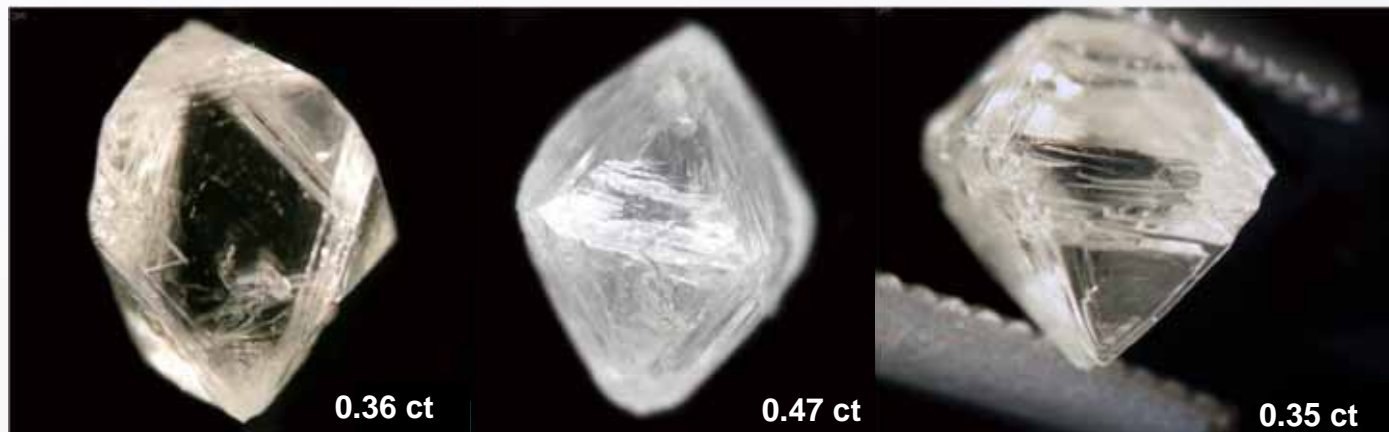
Qilaq

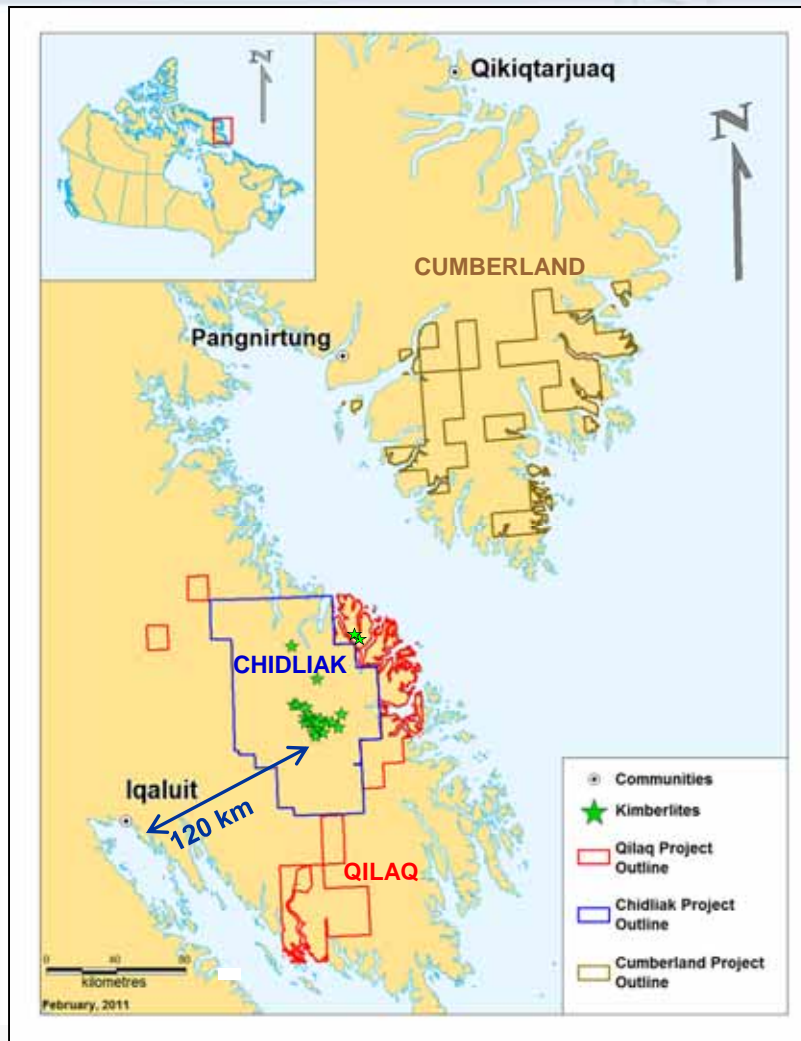
- 436,540 hectares
- 2 diamondiferous kimberlites to date
- 100% Peregrine



CHIDLIAK PROJECT OWNERSHIP

- Peregrine (49%) and BHP Billiton (51%) participating Joint Venture
- Diamond marketing rights are proportional to ownership at time of production
- Peregrine continues as operator in 2011
- Peregrine could become a vertically integrated diamond company
 - The key is controlling the marketing rights from a long-term supply of diamonds





1.8 million hectares on South Baffin Island

- Qilaq – 2 diamondiferous kimberlites; metals anomalies
- Cumberland – metals anomalies
- Terrain suitable for road from Iqaluit to Chidliak
 - Not reliant on an ice road
- Close to deep tidewater



Kimberlite outcrop



Chrome diopside



2 diamondiferous kimberlites
discovered at surface in 2010

2005 – Reconnaissance sampling on Southern Baffin Island

- Jointly funded by Peregrine and BHP Billiton, operated by BHP Billiton
- 5 samples with KIMs at what is now Chidliak

2006, 2007 – Follow-up sampling and land acquisition in 2007

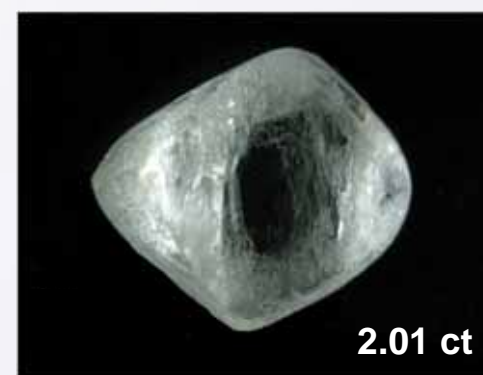
- Funded and operated by Peregrine
- Many samples with multiple KIMs, excellent (Ekati-quality) mineral chemistry

2008 – Airborne survey and discovery of 3 diamondiferous kimberlites by prospecting (CH-1, CH-2 & CH-3)

- Funded and operated by Peregrine

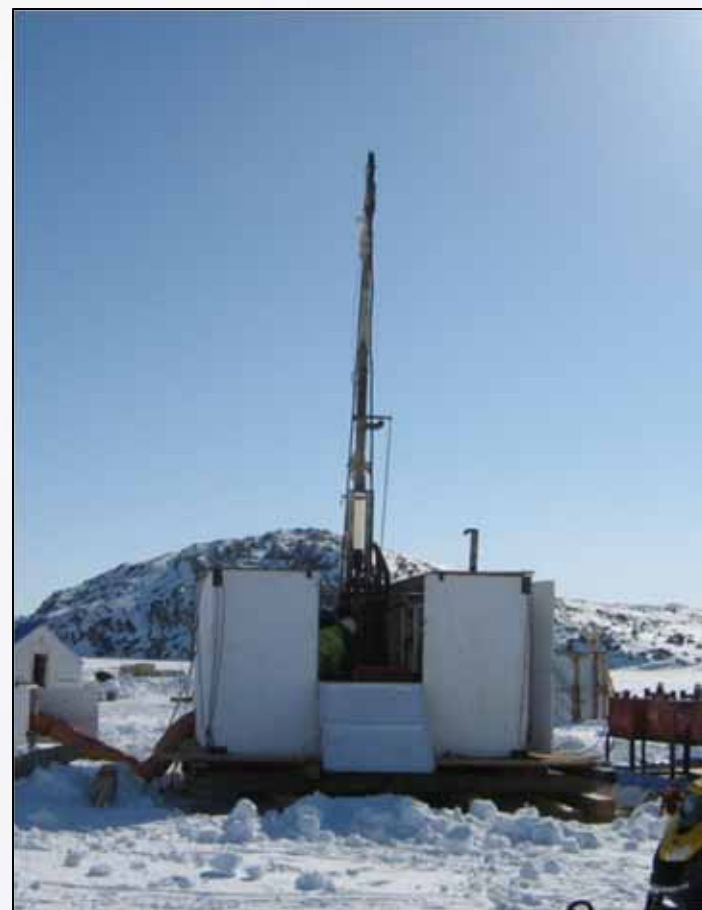
November 2008 - BHP Billiton exercises earn-in rights (C\$22.3 M for 51%)

- Funded by BHP Billiton, operated by Peregrine
- First year of core drilling
- Discovery of 13 kimberlites (CH-4 to 16), three with characteristics consistent with economic potential in Arctic setting
 - 7 by drilling, 6 by prospecting and ground-truthing
 - 12 diamondiferous
- ~50 tonne mini-bulk sample of CH-1
 - 0.45 ct/t with high quality, coarse diamonds



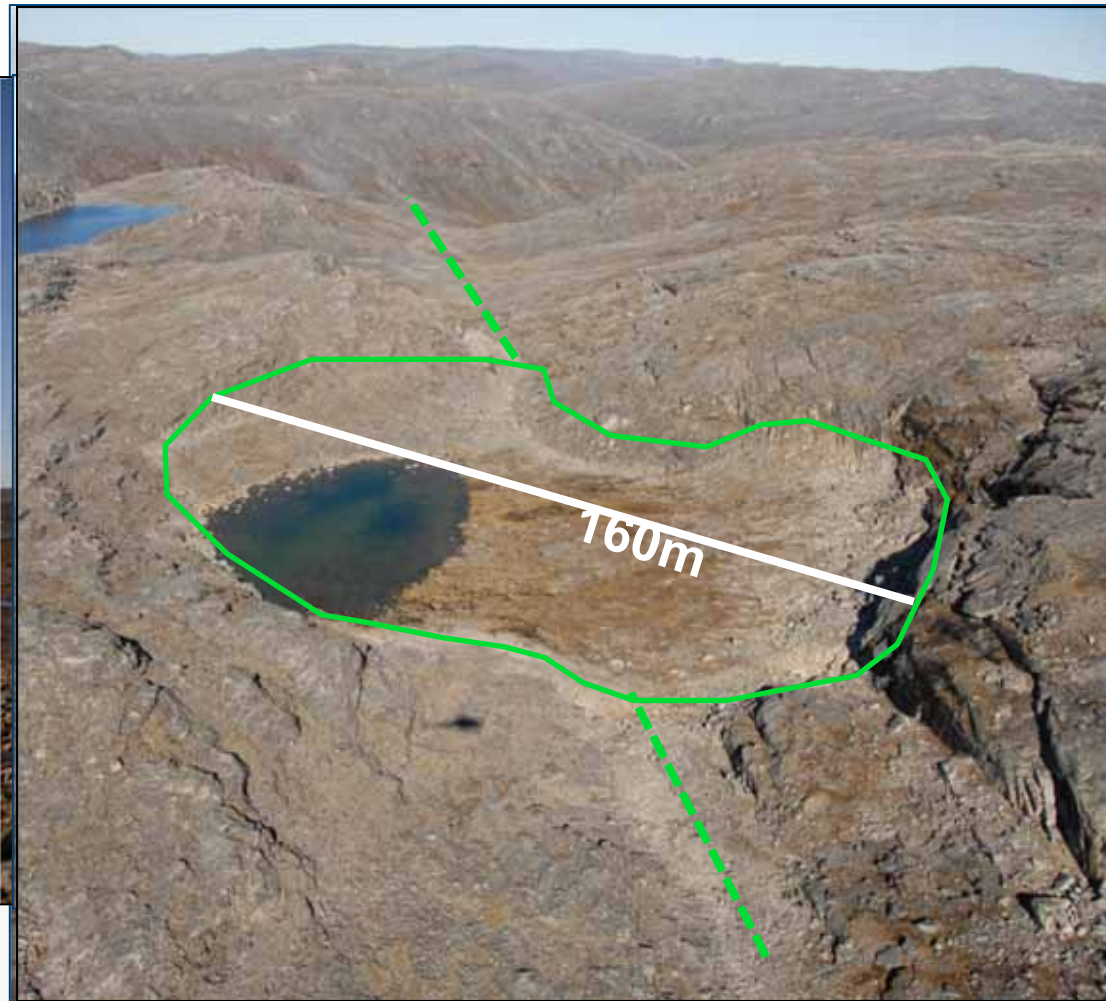
- 34 kimberlites discovered (CH-17 to 50)
 - 19 by drilling, 15 by prospecting
- 47 tonne mini-bulk sample from CH-7
- 14 tonne mini-bulk sample from CH-6
- 9,179 metres of drilling
- 20,500 line-km airborne survey
- 1,800 line-km of ground geophysics
 - ~ 100 geophysical anomalies covered

Sept. 23 - BHP Billiton vests with 51% and the Joint Venture is formed



CHIDLIAK KIMBERLITES

DIVERSE TOPOGRAPHIC EXPRESSION



CH-6

- No topographic expression
- No outcrop

CH-31

- Subtle topographic depression
- Subcrop

CH-5

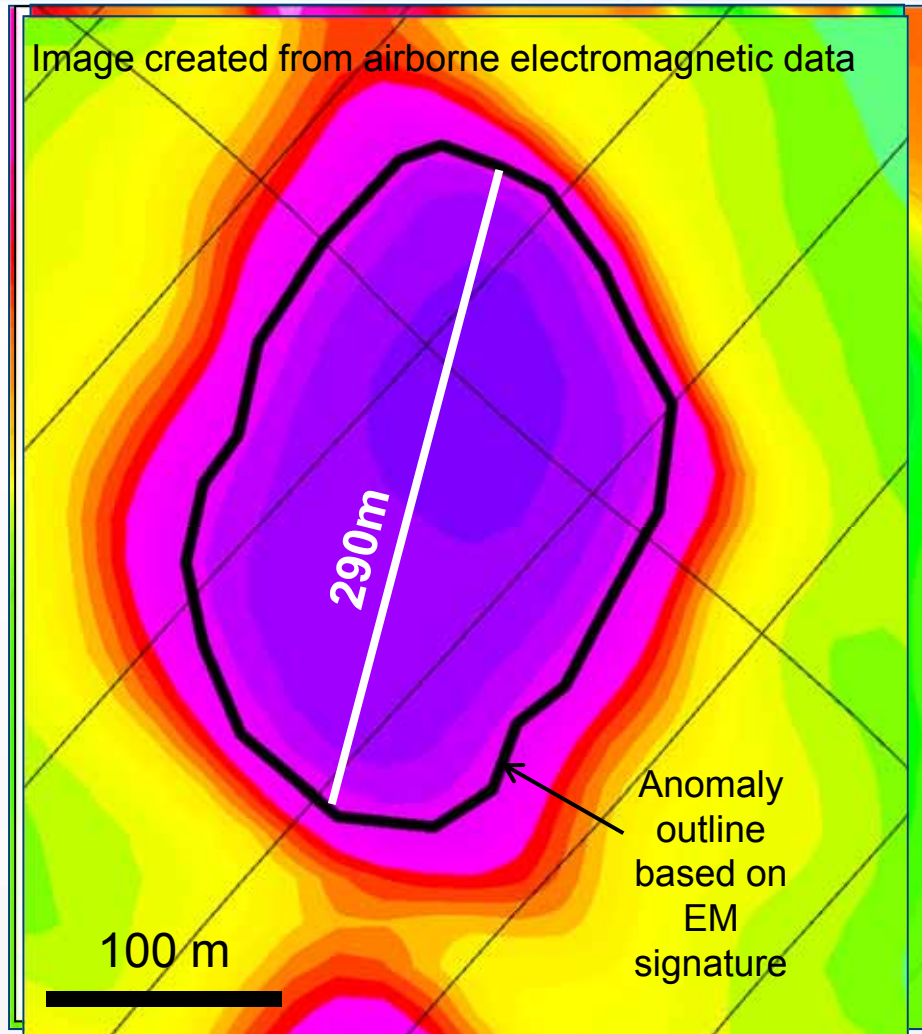
- Vegetation anomaly
- Subcrop

CH-28

- Distinct crater-like depression
- Boulders & subcrop

CHIDLIAK KIMBERLITES

DIVERSE GEOPHYSICAL EXPRESSION



CH-1

- Complex magnetic high anomaly

CH-6

- Distinct magnetic low anomaly

CH-31

- Large subtle magnetic low anomaly
- Pronounced EM signature on land
- Estimated size >5 ha

**DISCOVERIES ARE IMPROVING
OUR UNDERSTANDING OF THESE
SIGNATURES**

Image created from ground magnetic data

DISCOVERED DURING MAPPING OF GLACIAL SEDIMENTS

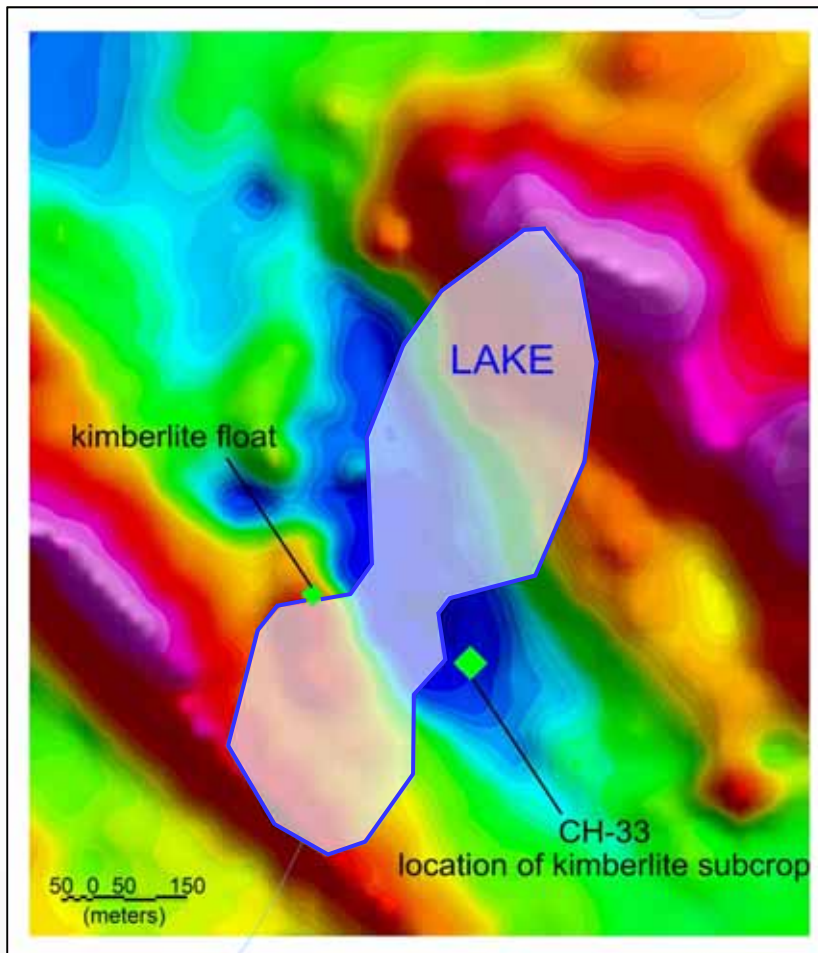


Image created from aeromagnetic data

Discovered in 2010
while doing Quaternary
studies

Estimated >7 ha in size

Coarse grained olivine

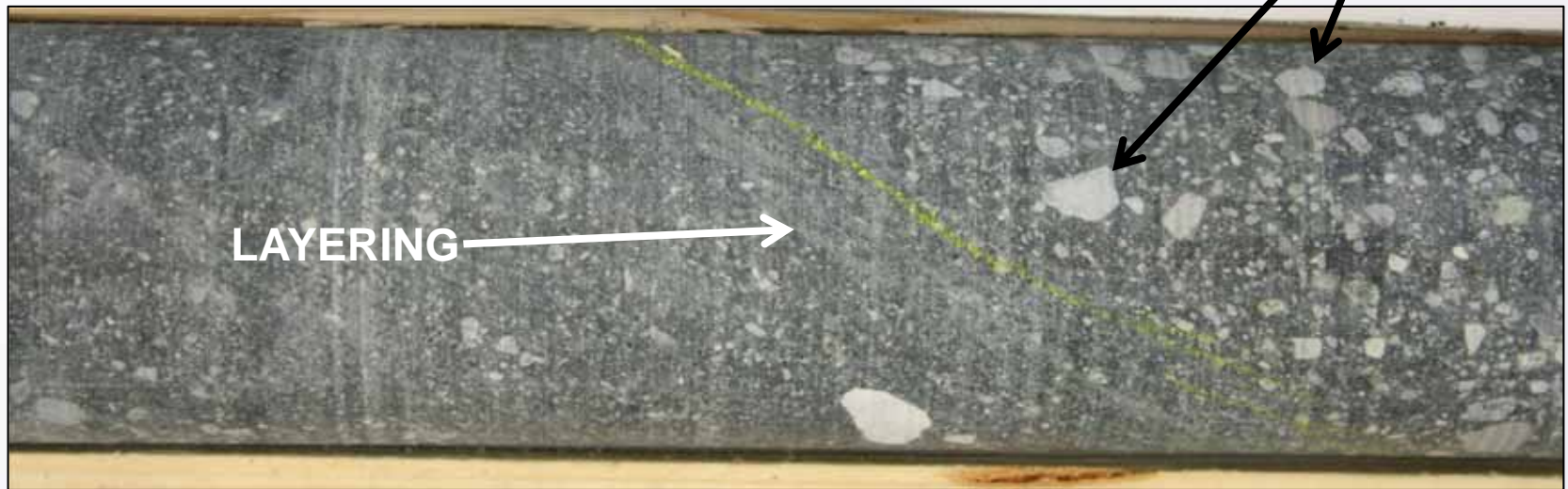


CHIDLIAK KIMBERLITES

DIVERSE GEOLOGY

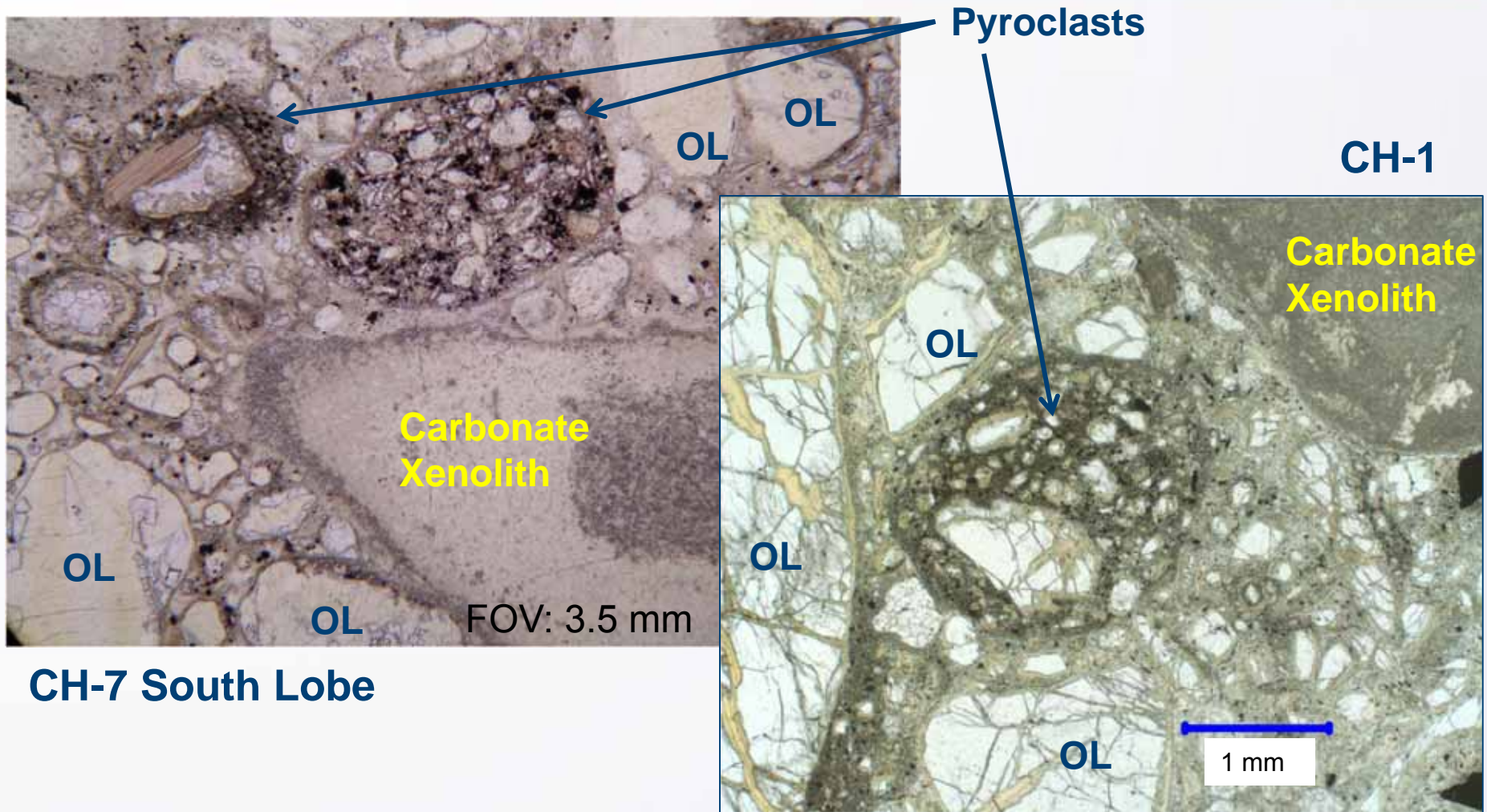


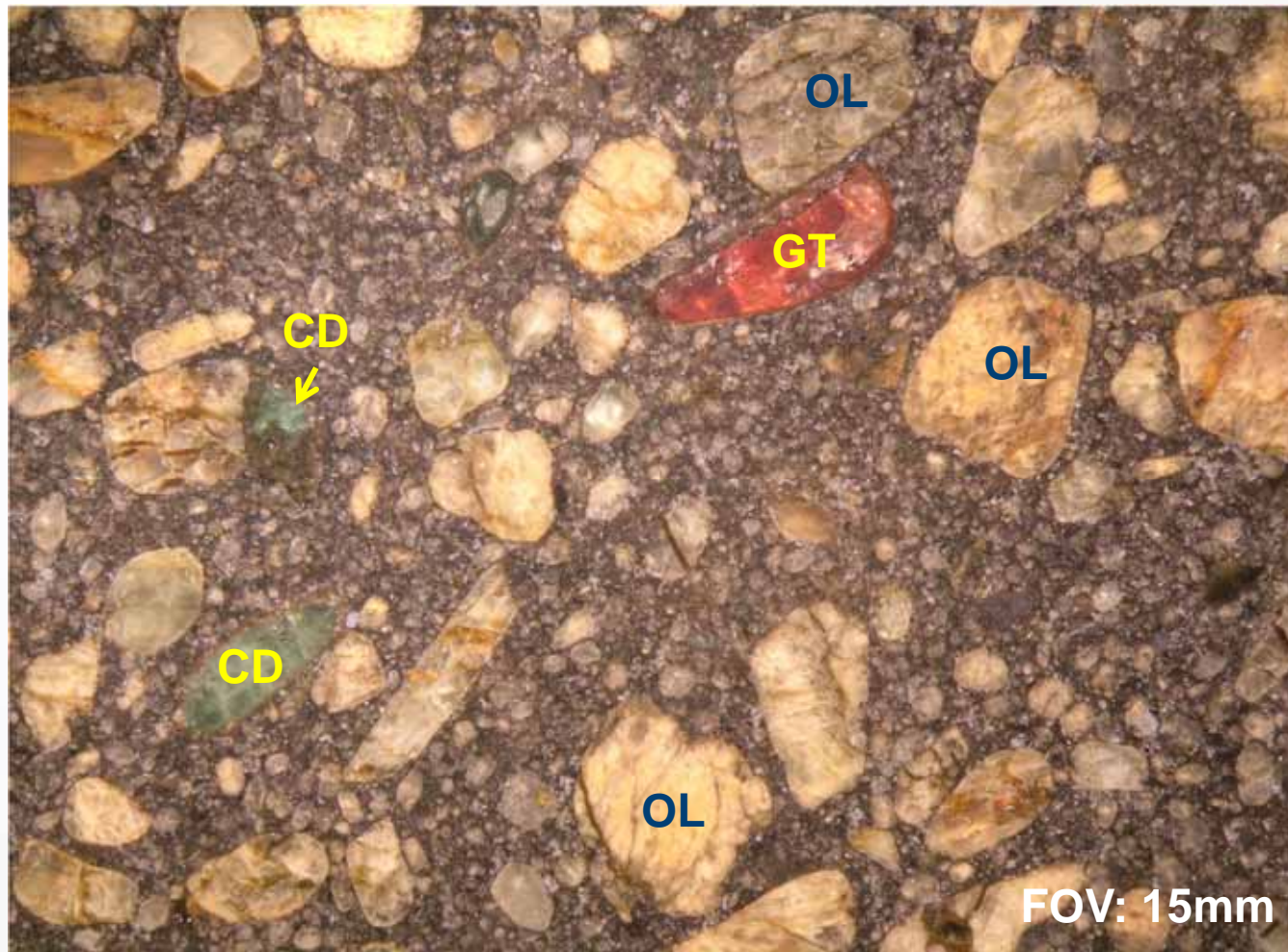
47.6 mm (NQ)
47.6 mm (NQ)



CHIDLIAK KIMBERLITES

DIVERSE GEOLOGY

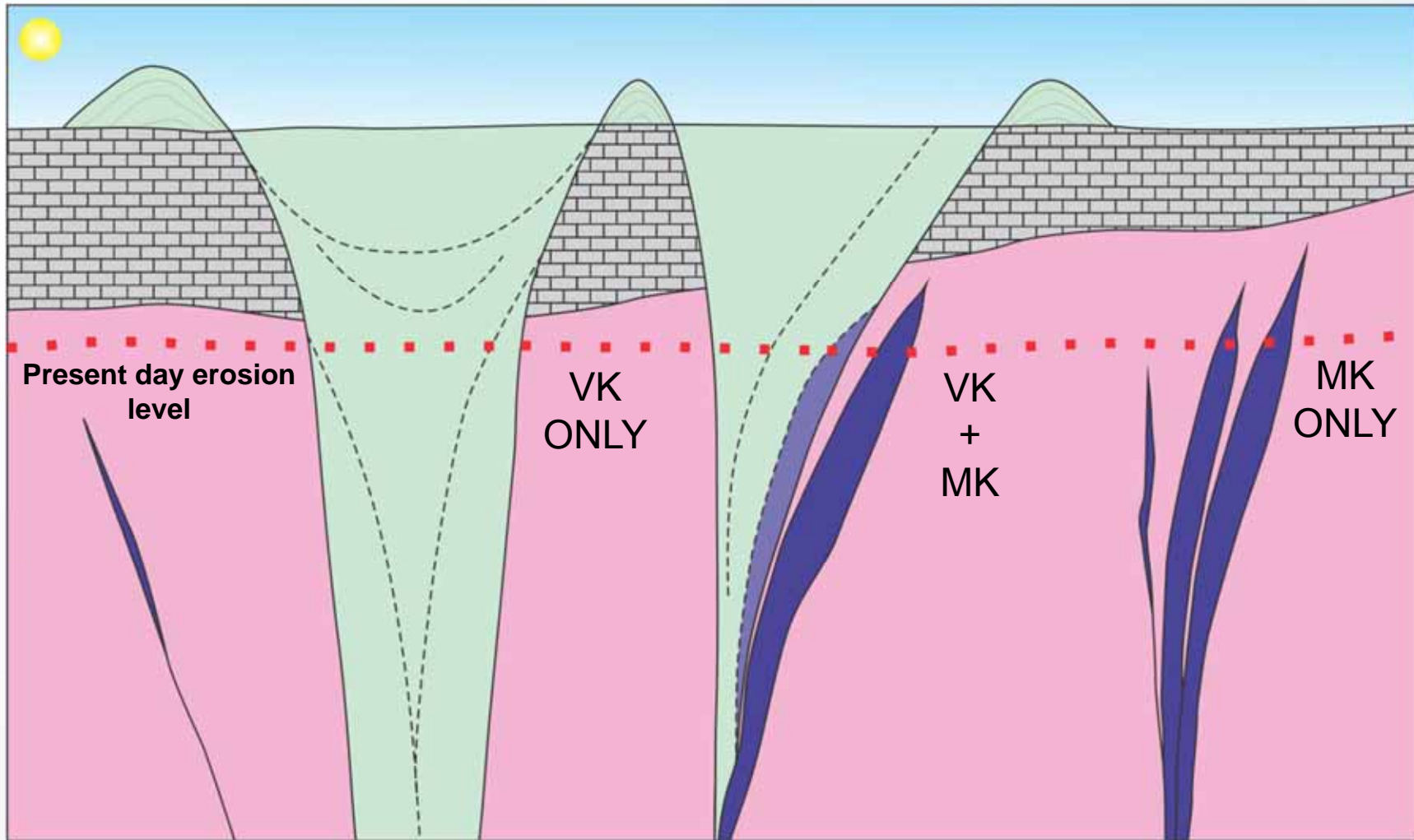






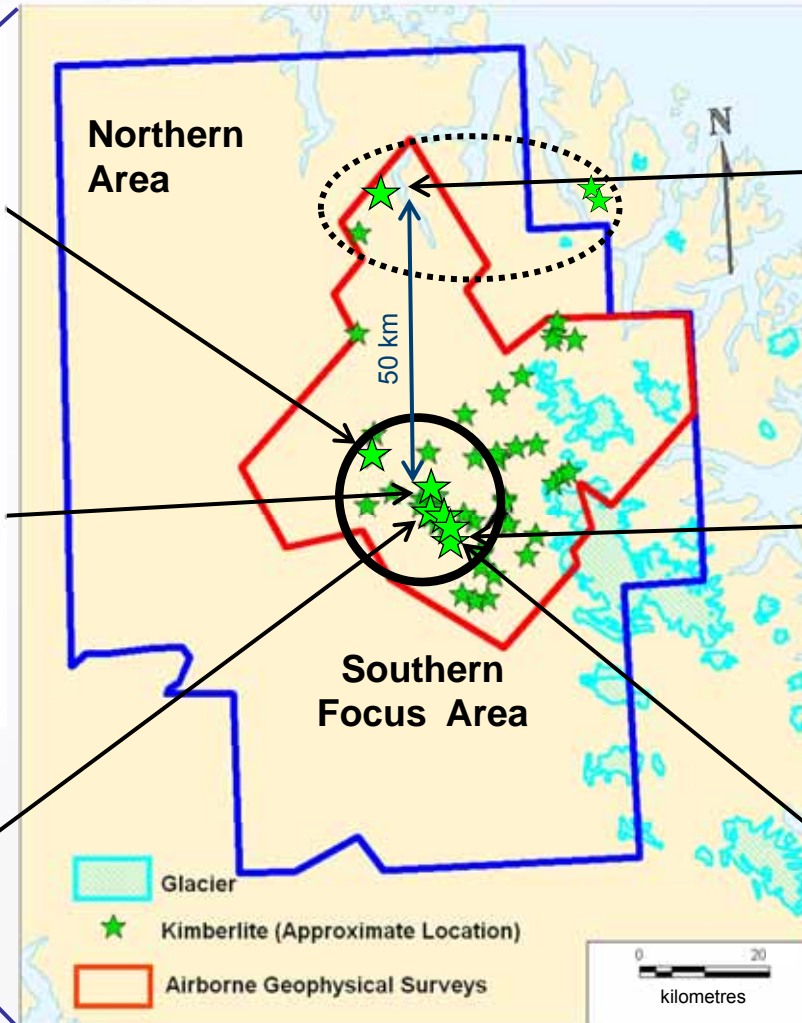
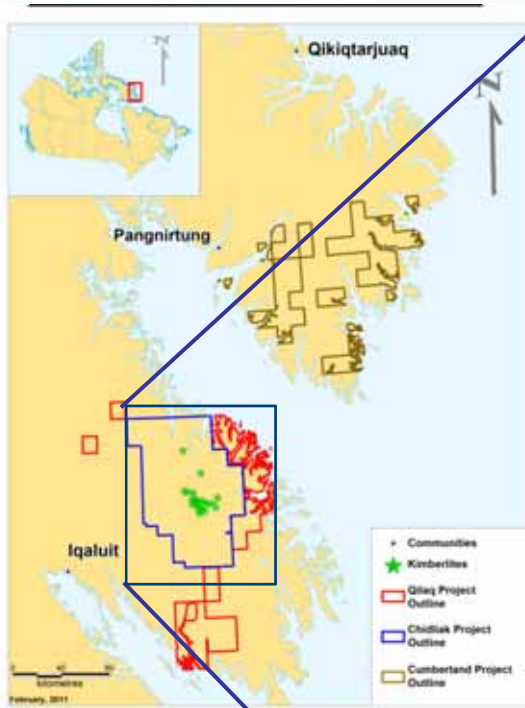
CHIDLIAK KIMBERLITES

IDEALIZED EROSIONAL MODEL



CHIDLIAK HIGHLIGHTS

★ 7 KIMBERLITES WITH ECONOMIC POTENTIAL



CH-28 ~2 ha



0.11 ct

CH-31 >5 ha



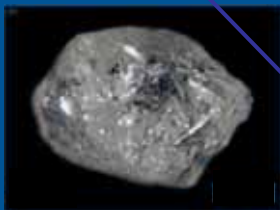
1.15 ct

CH-44, 45 <1 ha



0.33 ct

CH-7 ~1 ha



2.18 ct



PEREGRINE
DIAMONDS LTD.

KIMBERLITES WITH ECONOMIC POTENTIAL

CAUSTIC FUSION ANALYSES SUMMARY

Kimberlite	Weight	Stones <0.600 mm	Stones +0.850 mm	Stones +1.180 mm	Stones +1.700 mm	Stones +2.360 mm	Stones +3.350 mm	Total Number of Diamonds	Carats >0.85
SOUTHERN FOCUS AREA									
CH-1	1,364.6	3,570	14	7	6	0	0	3,597	0.89
CH-6	569.1	3,900	63	28	13	4	1	4,009	4.58
CH-7	1,149.25	2,312	30	8	1	2	2	2,355	2.14
CH-31	839.95	228	1	2	0	1	1	233	1.39
CH-44	312.2	901	6	2	0	1	0	910	0.45
CH-45	173.6	156	1	0	1	0	0	158	0.09
NORTHERN AREA									
CH-28	238.85	169	2	2	1	0	0	174	0.2

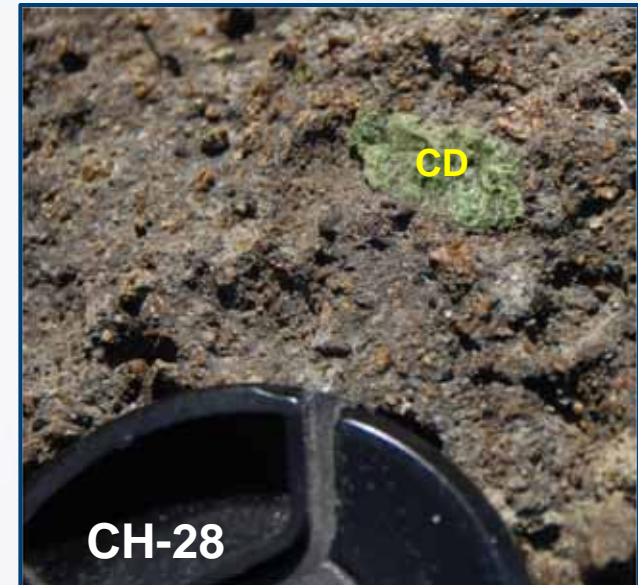
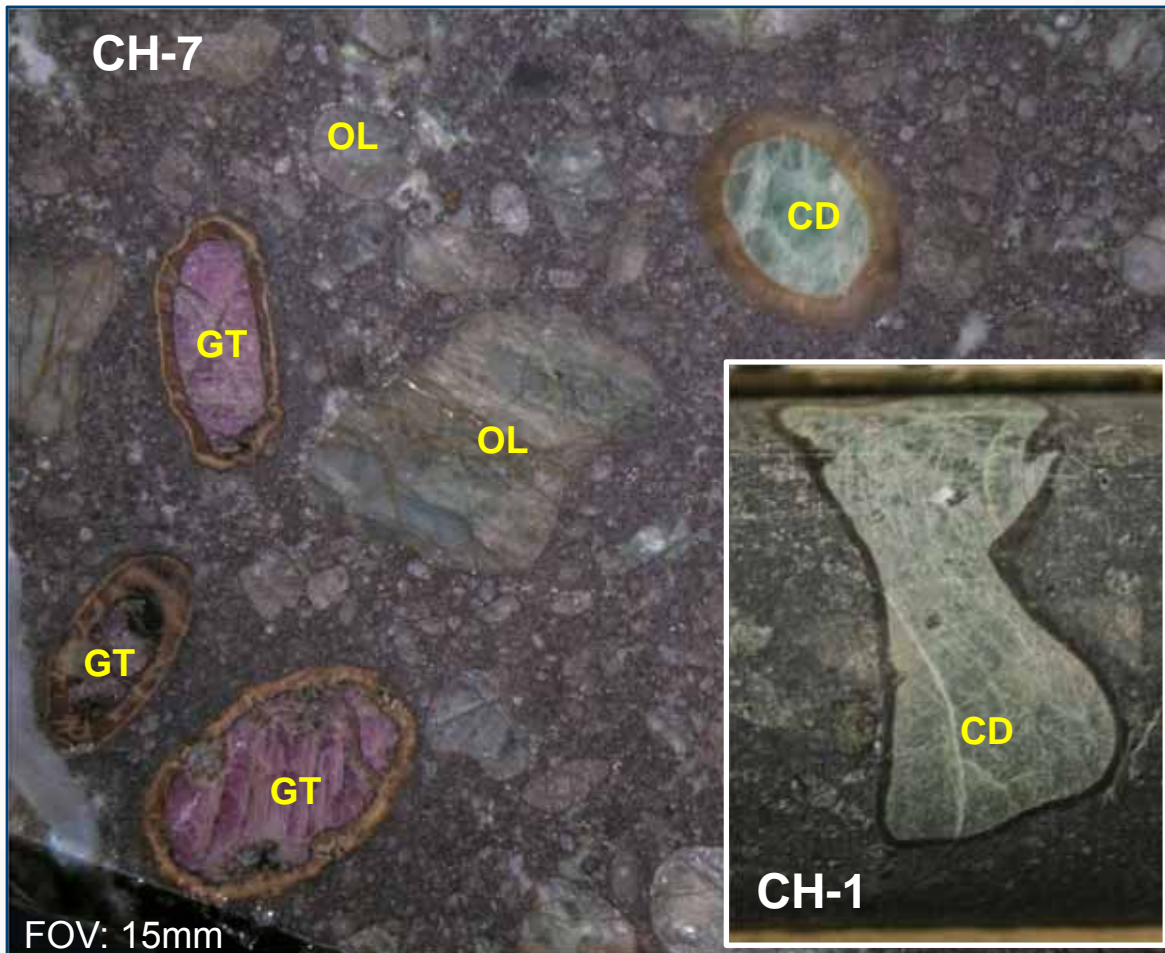


COARSE DIAMOND SIZE DISTRIBUTION
COMMERCIAL-SIZED STONES RECOVERED
FROM SMALL SAMPLES



KIMBERLITES WITH ECONOMIC POTENTIAL

STRONG MANTLE SIGNATURE - INDICATOR MINERAL-RICH





PEREGRINE
DIAMONDS LTD.

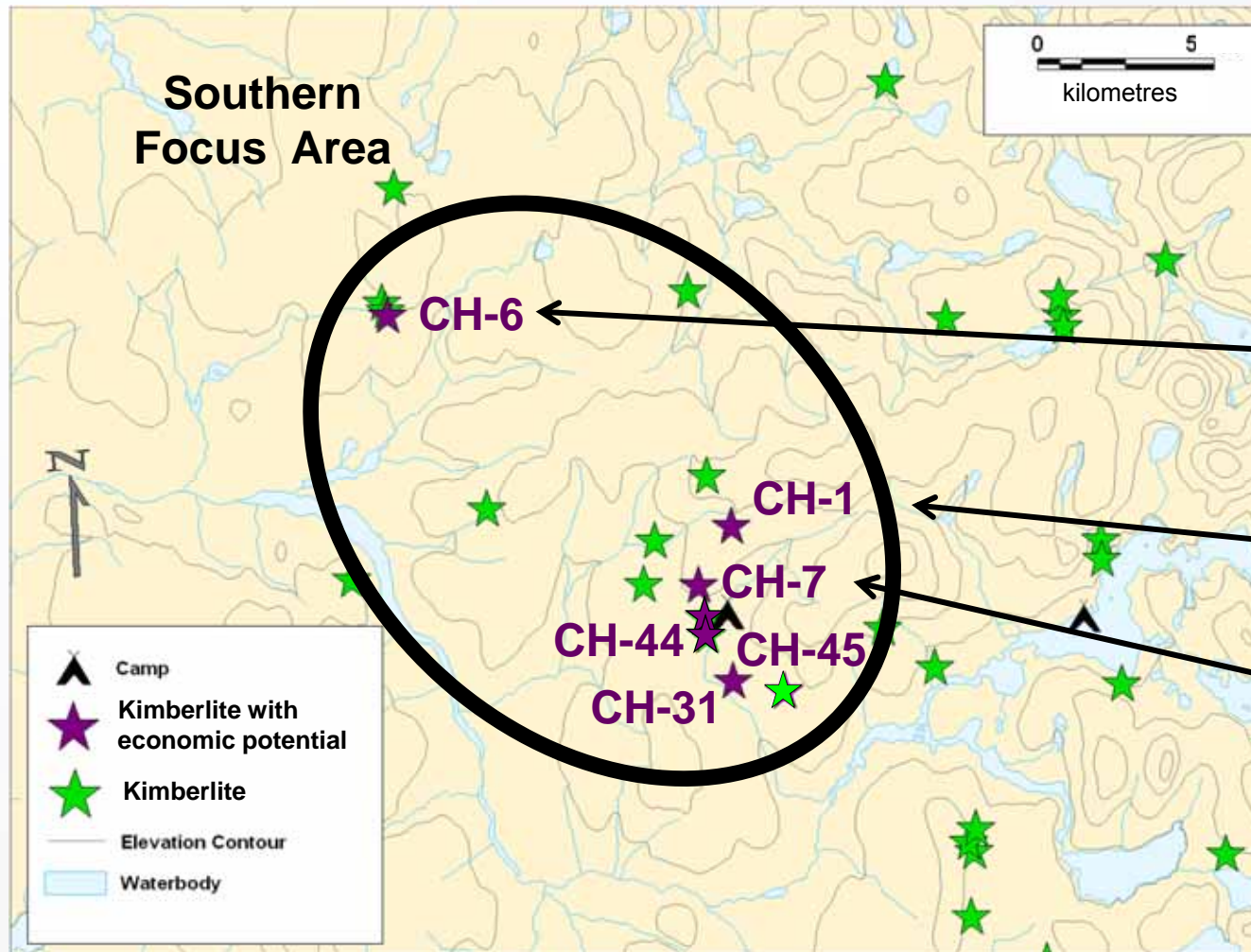
KIMBERLITES WITH ECONOMIC POTENTIAL

STRONG MANTLE SIGNATURE – MANTLE XENOLITHS



CHIDLIAK HIGHLIGHTS

SOUTHERN FOCUS AREA



Mini-bulk
samples from
3 kimberlites

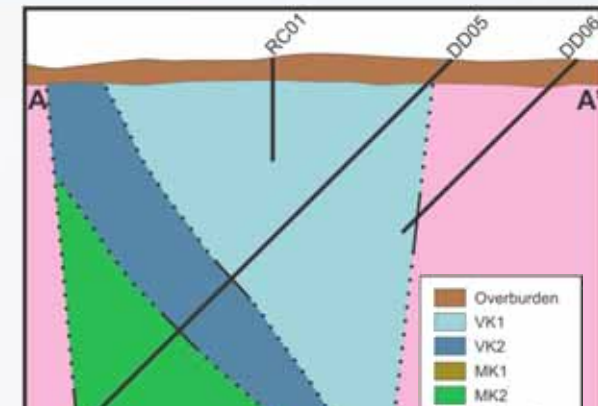
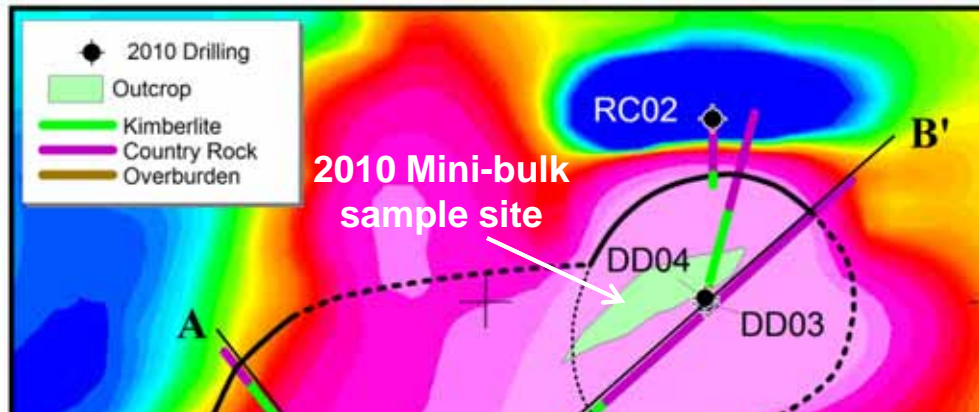
CH-6 (2010)

CH-1 (2009)

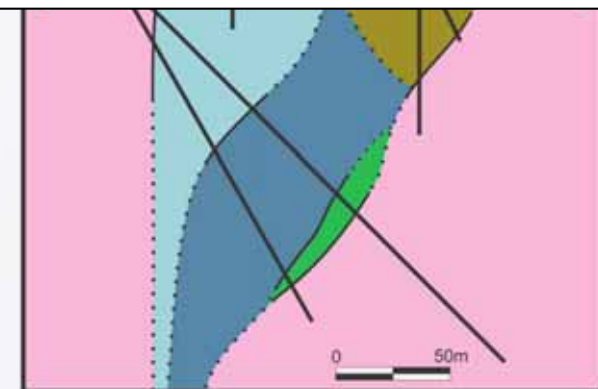
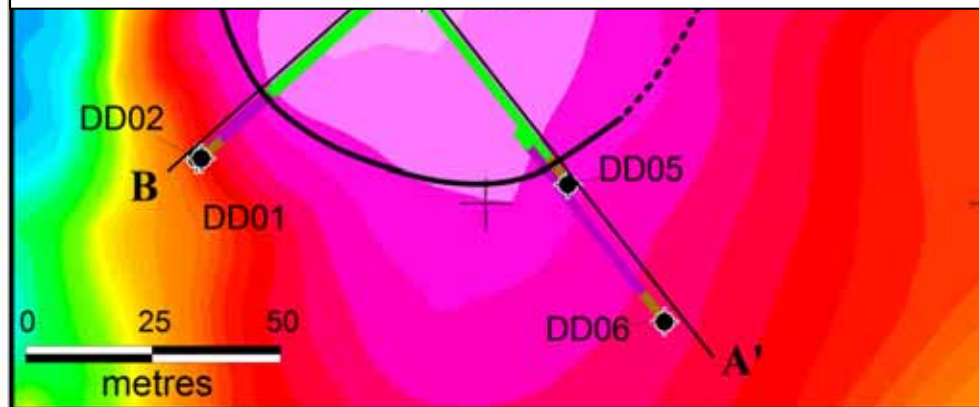
CH-7 (2010)

Dry Sample Weight (tonnes)	Numbers of Diamonds According to Sieve Size Fraction (mm)						Total Diamonds	Carats (+0.85 mm)	Diamond Content (cpt) (+0.85 mm)
	+0.85 -1.18	+1.18 -1.70	+1.70 -2.36	+2.36 -3.35	+3.35 -4.75	+4.75			
47.19	146	172	111	55	16	2	502	49.07	1.04





Mini-bulk sample results support future bulk sampling

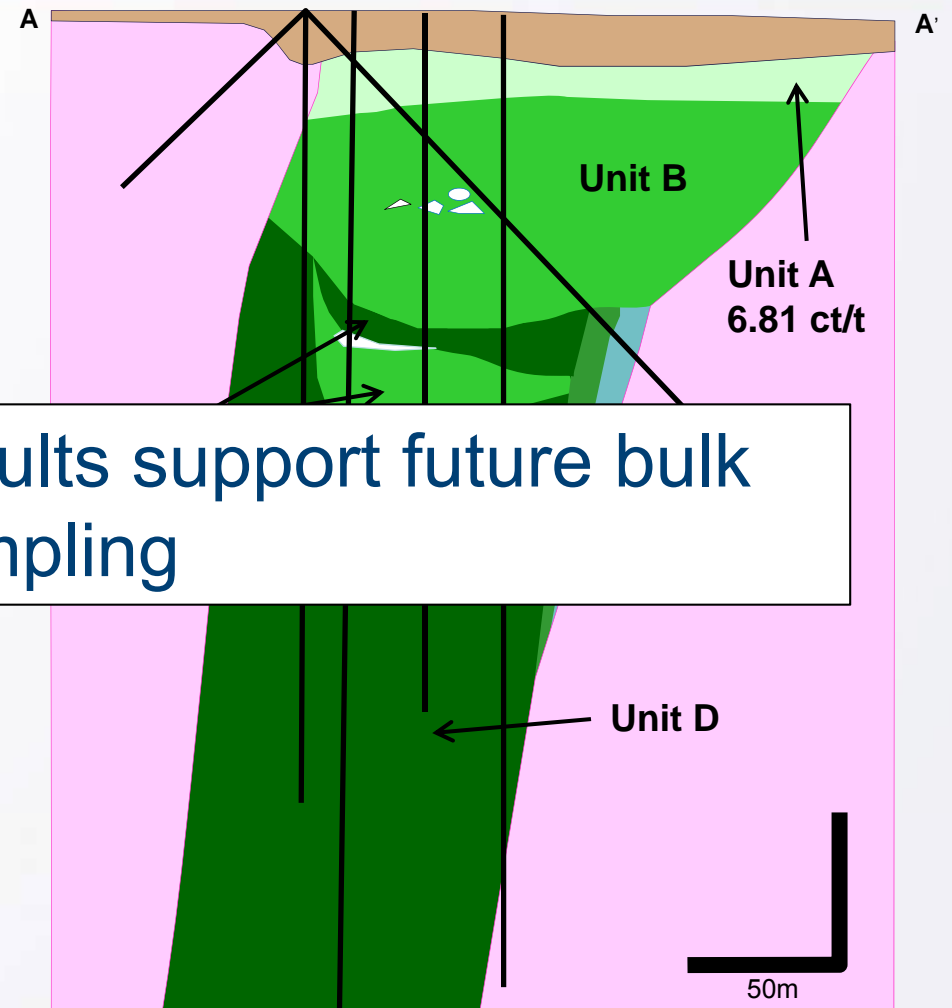
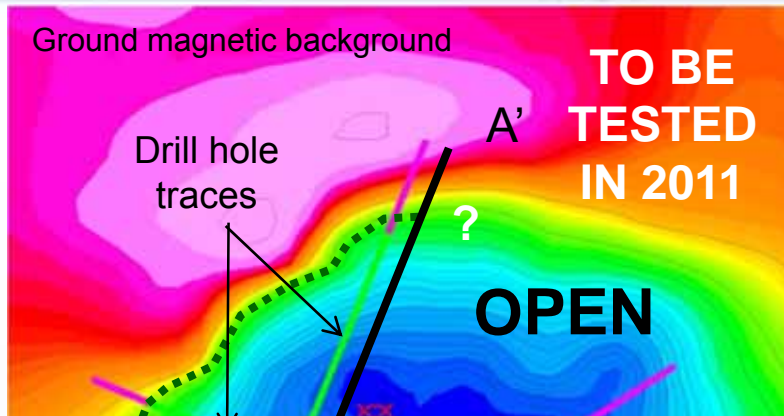


Interpretive cross-sections

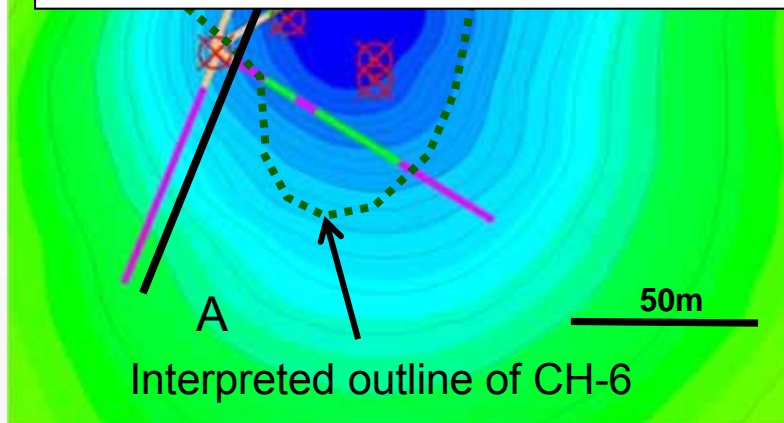
Kimberlite Sample	Sample Weight (tonnes)	Numbers of Diamonds According to Sieve Size Fraction (mm)						Total Diamonds	Carats (+0.85 mm)	Diamond Grade (cpt) (+0.85 mm)
		+0.85 -1.18	+1.18 -1.70	+1.70 -2.36	+2.36 -3.35	+3.35 -4.75	+4.75			
Unit A	1.03	16	27	10	5	3	1	61	7.03	6.81
Unit B	3.38	37	70	32	14	0	0	153	9.53	2.82
Unit C	2.13	22	36	20	8	3	0	89	7.44	3.49
Unit D	7.56	48	70	44	24	4	0	190	15.32	2.03
Plant Cleanup	-	14	13	2	0	0	0	29	0.72	-
Total	14.11	-	-	-	-	-	-	523	40.04	2.84

The diamond grade of these samples as determined by DMS processing may not be representative of the overall diamond grade of this kimberlite due to a number of factors including the limited area of the kimberlite from which the CH-6 sample was collected and the relatively small size of the mini-bulk sample.

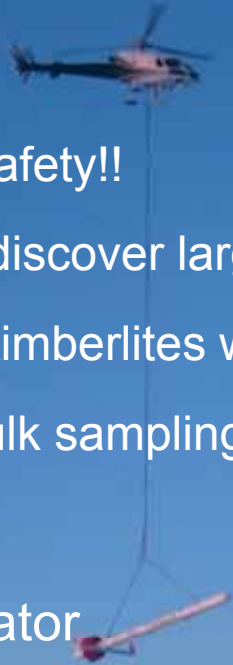




Mini-bulk sample results support future bulk sampling



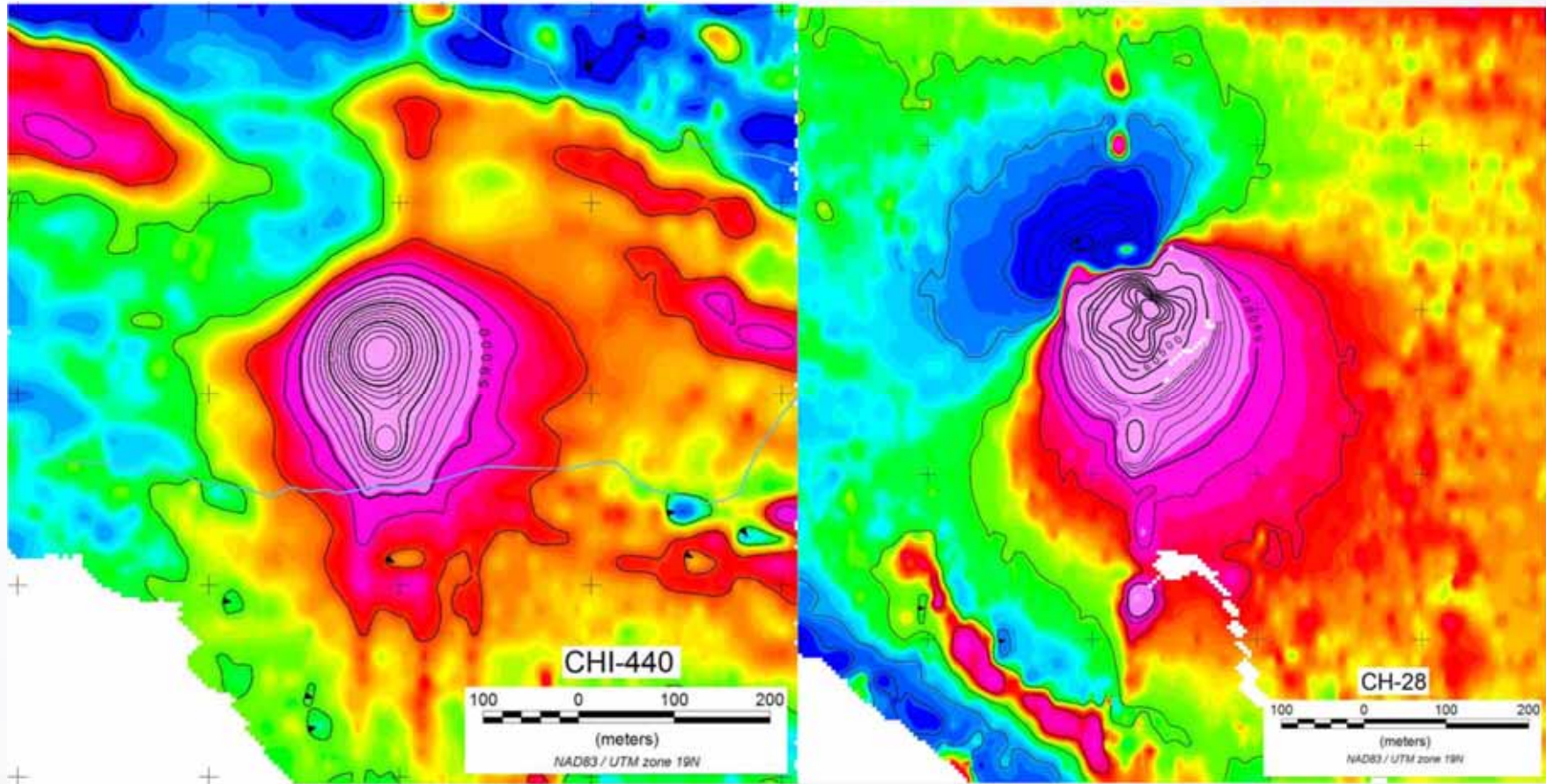
- Approved budget of \$17.7 Million for 2011 programme
- Main priorities:
 - Strong commitment to safety!!
 - Focused exploration to discover large kimberlites
 - Further assessment of kimberlites with economic potential
 - Preparation for future bulk sampling by large diameter RC rig
- 3 drill rigs on site
- Peregrine remains the operator



- **12,000 line-km** airborne survey
- **400** follow-up till samples
- **20 tonne** mini-bulk sample from CH-28
- **11,000** metres of drilling
- **100** anomalies evaluated by prospecting
- **1,100** line-km of ground geophysics
 - **~ 50 grids covered**
- Continuing environmental baseline studies
- Study of glacial dynamics continues
- Preparations for Bulk Sampling in 2012



Drilling to commence mid-March 2011



Anomaly 440, close to CH-28
Under a small lake; (distinctive magnetic signature)

BULK SAMPLING IN 2012

Planning and preparations in progress for the collection of bulk samples from CH-6, CH-7 and possibly other kimberlites.

Need to determine bulk sampling requirements to commence permitting.



- Strong ties with the communities of Pangnirtung and Iqaliut
- Committed to local hiring and purchasing
- Ongoing environmental baseline studies





ACCOMPLISHMENTS TO DATE

7 KIMBERLITES WITH ECONOMIC POTENTIAL AND COUNTING

- 50 kimberlites discovered
 - 24 by prospecting and 26 by drilling
 - 34 of 35 kimberlites tested are diamondiferous
- 7 pipes have characteristics of economic potential in Arctic settings
 - CH-1, CH-6, CH-7, CH-28, CH-31, CH-44 and CH-45
 - 4 of these pipes \geq 1 hectare in size
 - High quality diamonds recovered
- CH-31 is $>$ 5 ha and has a population of coarse diamonds
 - Demonstrates large tonnage potential at Chidliak
- Other geophysical anomalies similar to CH-31 to be tested in 2011
- More kimberlites will be discovered in 2011
- Chidliak compares favourably to early days of Ekati™ & Diavik™



PEREGRINE
DIAMONDS LTD.

QILAQ AND CUMBERLAND PROJECTS

METALS ANOMALIES





PEREGRINE
DIAMONDS LTD.

EXTENSIVE GOSSANS AT QILAQ





PEREGRINE
DIAMONDS LTD.

CUMBERLAND PROJECT

MINERAL STAINED LAKE





PEREGRINE
DIAMONDS LTD.

Thank you.

شكرًا